



MPART Citizens

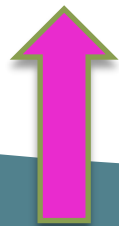
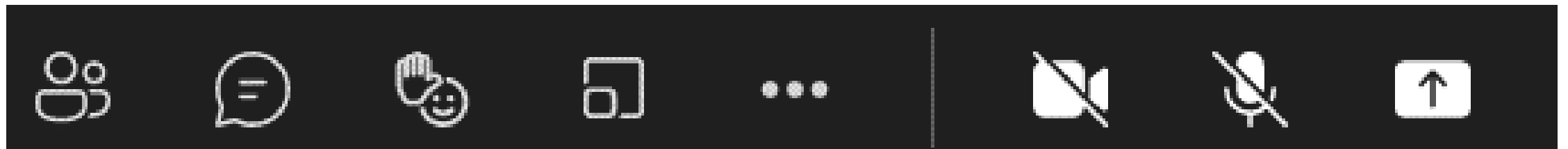
Advisory Workgroup

February 21, 2023

MPART

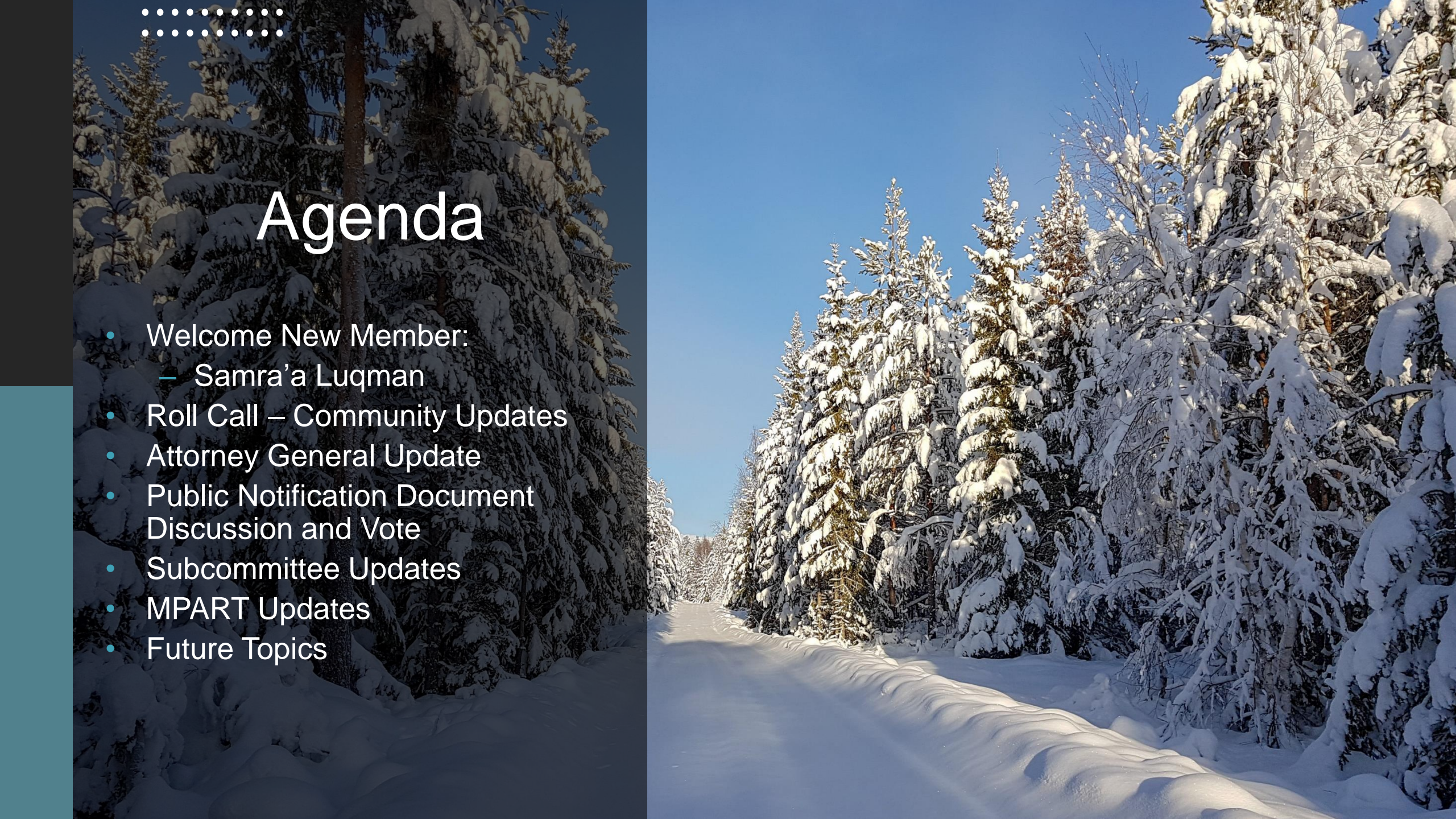
Housekeeping

- Please keep your mic/phone muted unless speaking
- Only use the “raise hand” and/or “chat” function for questions or to request to speak
- Cameras are optional
- This meeting is being recorded





Agenda

- Welcome New Member:
 - Samra'a Luqman
 - Roll Call – Community Updates
 - Attorney General Update
 - Public Notification Document Discussion and Vote
 - Subcommittee Updates
 - MPART Updates
 - Future Topics
- 

Roll Call and local updates/events/ sharing from communities



Attorney General Update

Danielle Allison-Yokom



Public Notification Discussion and Vote



CAWG Subcommittee's



Membership Subcommittee



Website Review Subcommittee



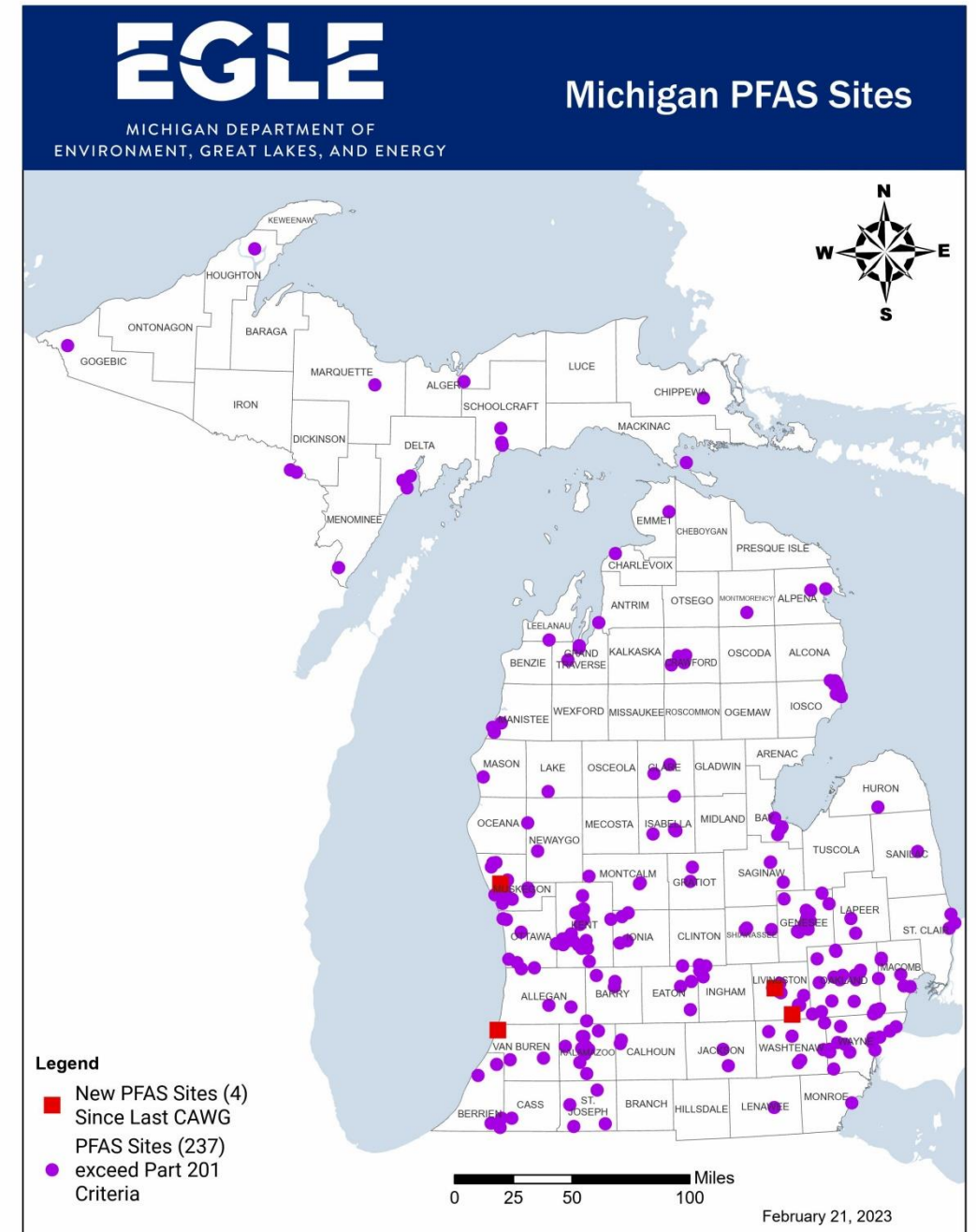
Preventative Measures Subcommittee



Engaging the Public Subcommittee

New Sites

- Former Four Star Property, South Haven, Van Buren County
- Former BASF Muskegon, North Muskegon, Muskegon County
- Hamburg Township WWTP, Hamburg, Livingston County
- 2440 West Highland Road – Upland Area of the Shiawassee River Superfund Site, Howell, Livingston County



Site Investigation Web Changes

- Added the disclaimer to every site investigation page
- Simplified content to include:
 - Background
 - Drinking Water Information
 - Anticipated Activities

**Web Review Subcommittee supported this change in January.*

Disclaimer

Web content may not routinely be updated on this page. Please contact the Site Lead for the most up-to-date status of the site.
Content posted February 2023.

EGLE Site Lead

Kevin Wojciechowski, WojciechowskiK@Michigan.gov or 586-623-2948.

Background

The Hamburg Wastewater Treatment Plant (WWTP), located at 6400 East M-36, discharges treated wastewater to the groundwater under a state Groundwater Discharge Permit issued to Hamburg Township. The WWTP has been in operation since 1966. The treatment system consists of sequencing batch reactors, a chemical feed system, and a polishing pond. The final treated effluent is discharged to the groundwater on-site via rapid infiltration basins.

Groundwater samples were collected in August and November 2022, the highest results were 27 ppt for PFOA and 22 ppt for PFOS.

Estimated groundwater flow direction in the area of the WWTP is radial. Groundwater flows towards Buck Lake and the Huron River.

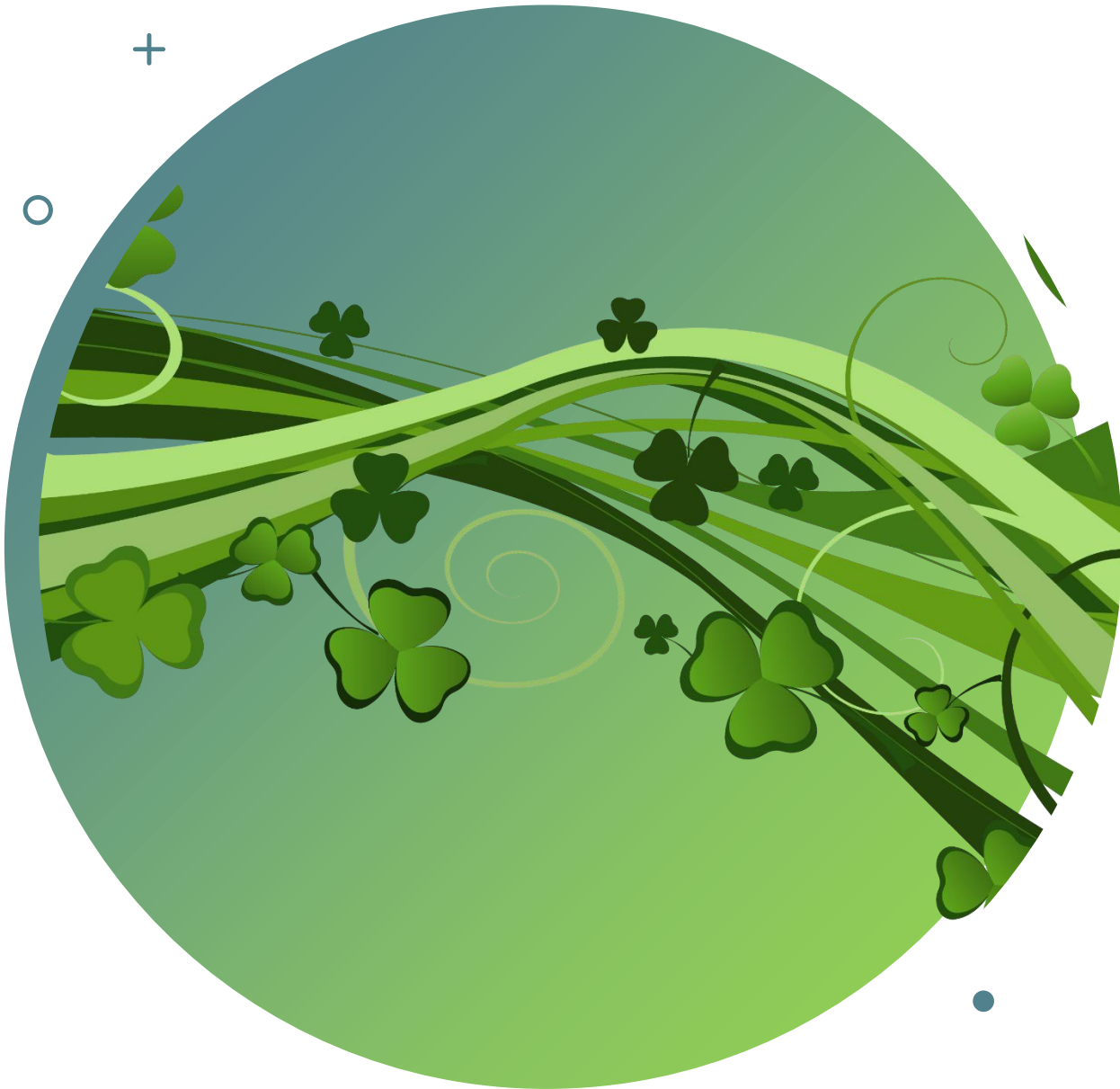


Drinking Water Information

Most of the residential homes and commercial businesses in the area are on drinking water wells. In November 2022, the township sampled the drinking water from Dairy Queen, which is southeast of this site. The results were non-detect for PFAS. Hamburg Township plans to sample additional drinking water wells in the area as determined necessary.

Anticipated Activities

EGLE will continue to work with Hamburg Township to evaluate the groundwater, drinking water, and surface water in the area of the WWTP to assess PFAS risks.



Future Topics?

Next CAWG Meeting –
March 14th

MICHIGAN PFAS ACTION RESPONSE TEAM (MPART)

www.Michigan.gov/PfasResponse



MICHIGAN DEPARTMENT OF
ENVIRONMENT, GREAT LAKES, AND ENERGY

