

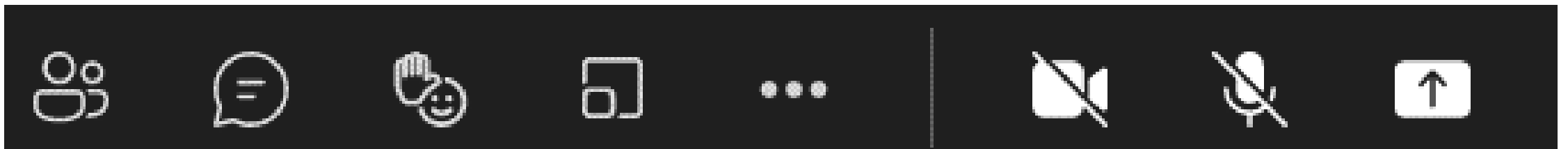


MPART Citizens Advisory Workgroup

April 9, 2024

Housekeeping

- Please keep your mic/phone muted unless speaking
- Only use the “raise hand” and/or “chat” function for questions or to request to speak
- Cameras are optional
- This meeting is being recorded



MPART

MICHIGAN PFAS ACTION RESPONSE TEAM

Agenda

- Roll Call – Community Updates
- Subcommittee Reports
- CERCLA Process Overview
- Mitigation / Remediation
- MPART Updates
- Schedule of Meetings



MPART

MICHIGAN PFAS ACTION RESPONSE TEAM

Roll Call and local updates/events/sharing from communities



MP

MICHIGAN PFAS ACTION RESPONSE TEAM

CAWG Subcommittee's



WEBSITE REVIEW
SUBCOMMITTEE



PREVENTATIVE MEASURES
SUBCOMMITTEE



ENGAGING THE PUBLIC
SUBCOMMITTEE



MEMBERSHIP
SUBCOMMITTEE



MICHIGAN DEPARTMENT OF
ENVIRONMENT, GREAT LAKES, AND ENERGY

CERCLA Process Overview

Kalan Briggs

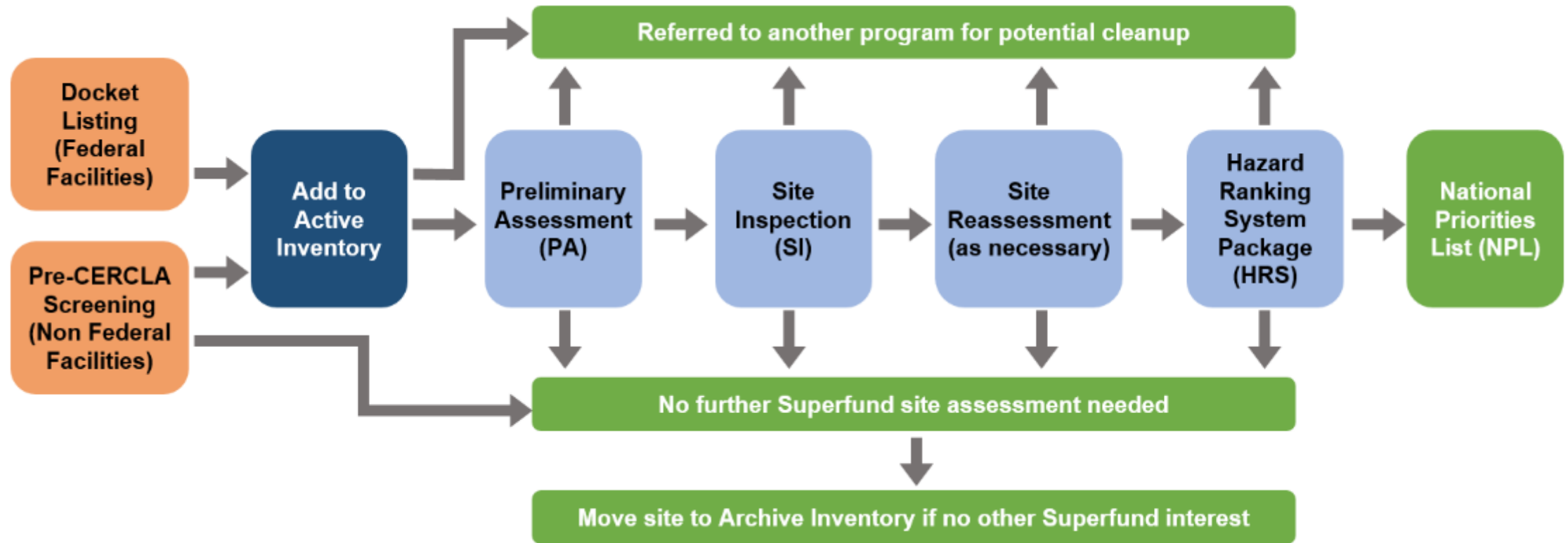
Superfund Section Manager

517-930-5227 | briggsk2@michigan.gov

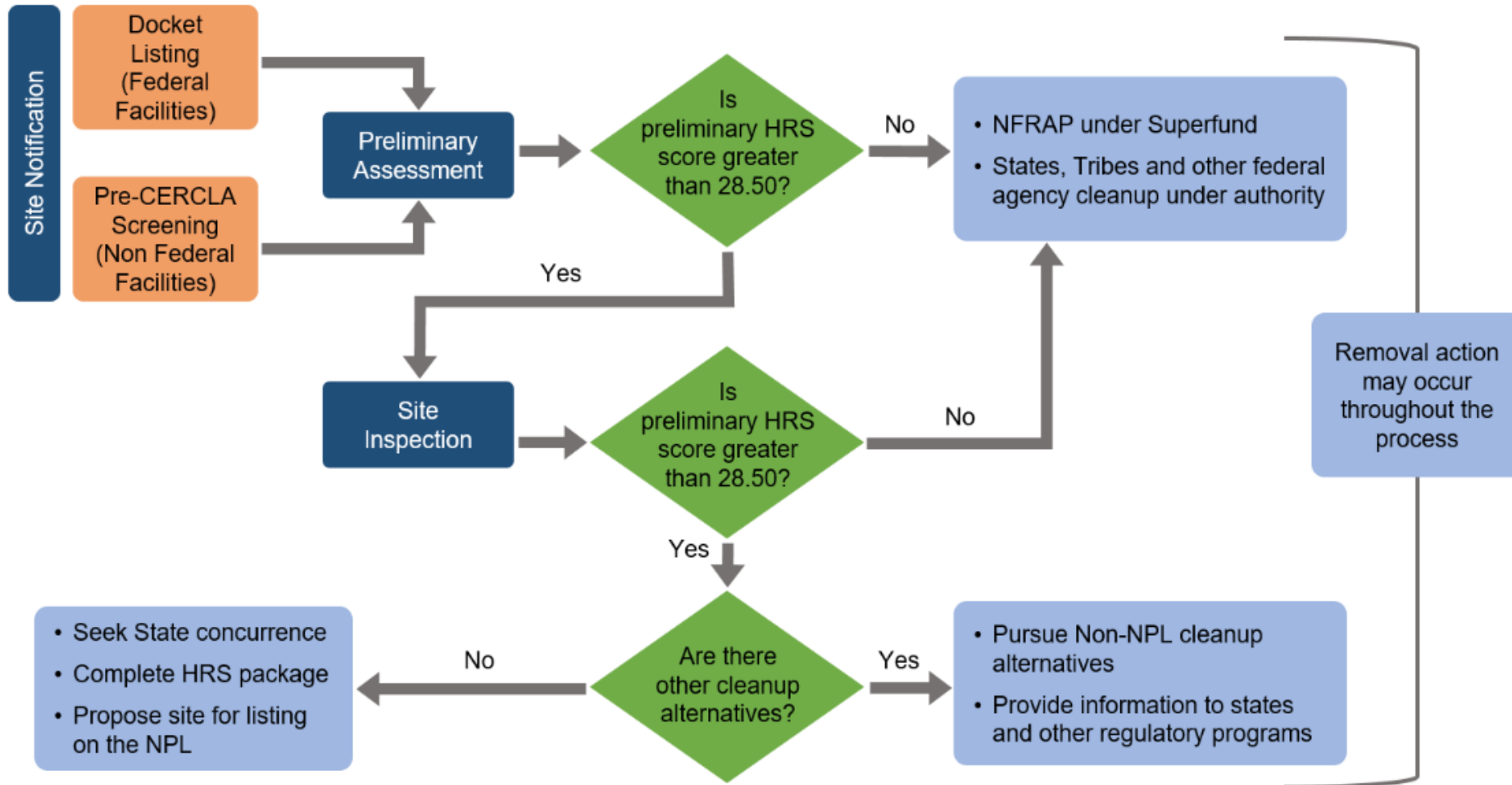
CERCLA Overview

- Comprehensive Environmental Response, Compensation, and Liability Act of 1980
 - Superfund Amendments and Reauthorization Act of 1986 (SARA)
- Two primary phases:
 - Pre-remedial/Site Discovery Process (aka Site Assessment)
 - Cleanup Process/Long-term monitoring

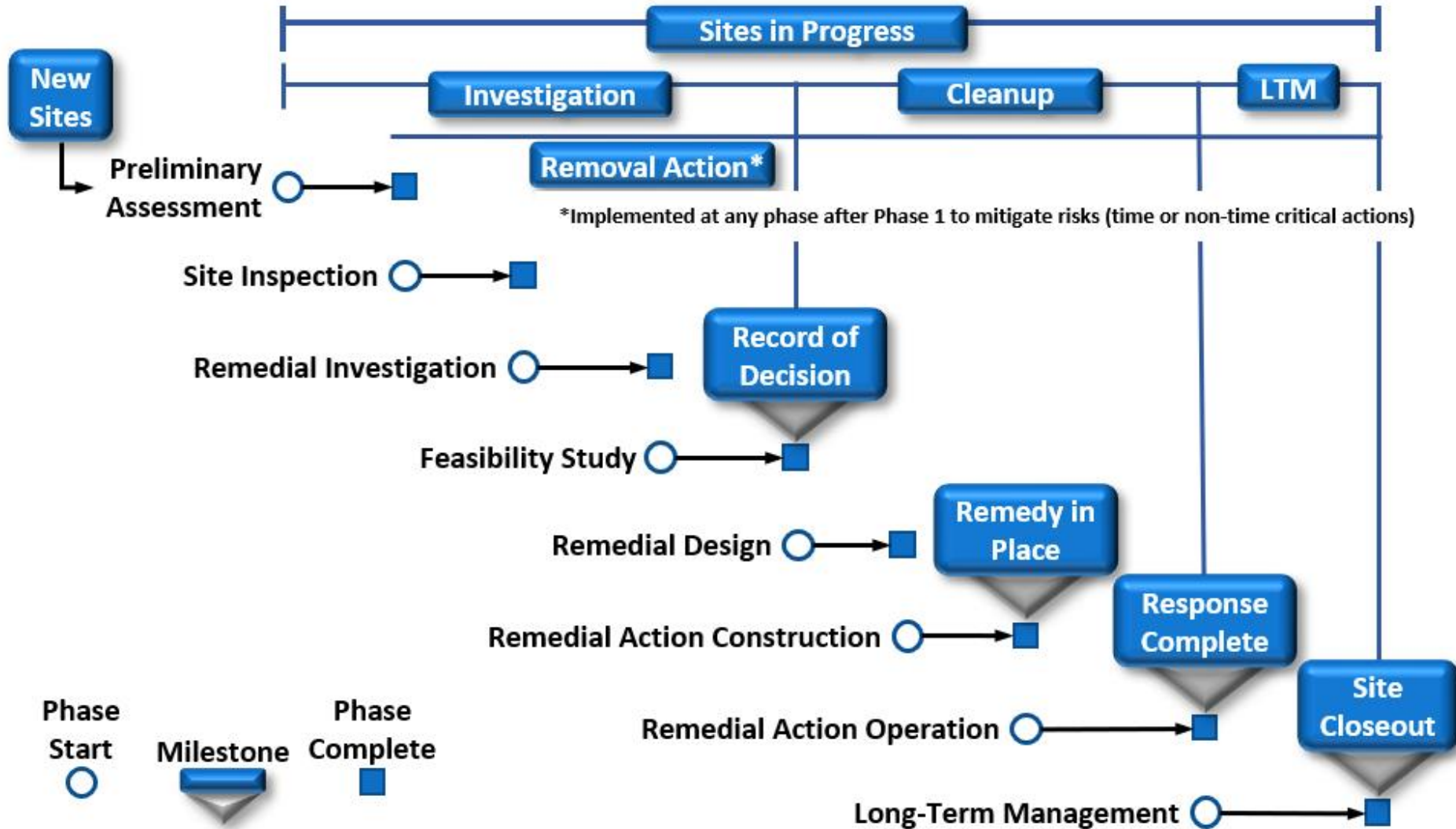
Environmental Protection Agency (EPA) Superfund Site Assessment Process



Listing Determination Process for National Priorities List (NPL)



Cleanup Process



Michigan Department of
Environment, Great Lakes, and Energy

800-662-9278

Michigan.gov/egle



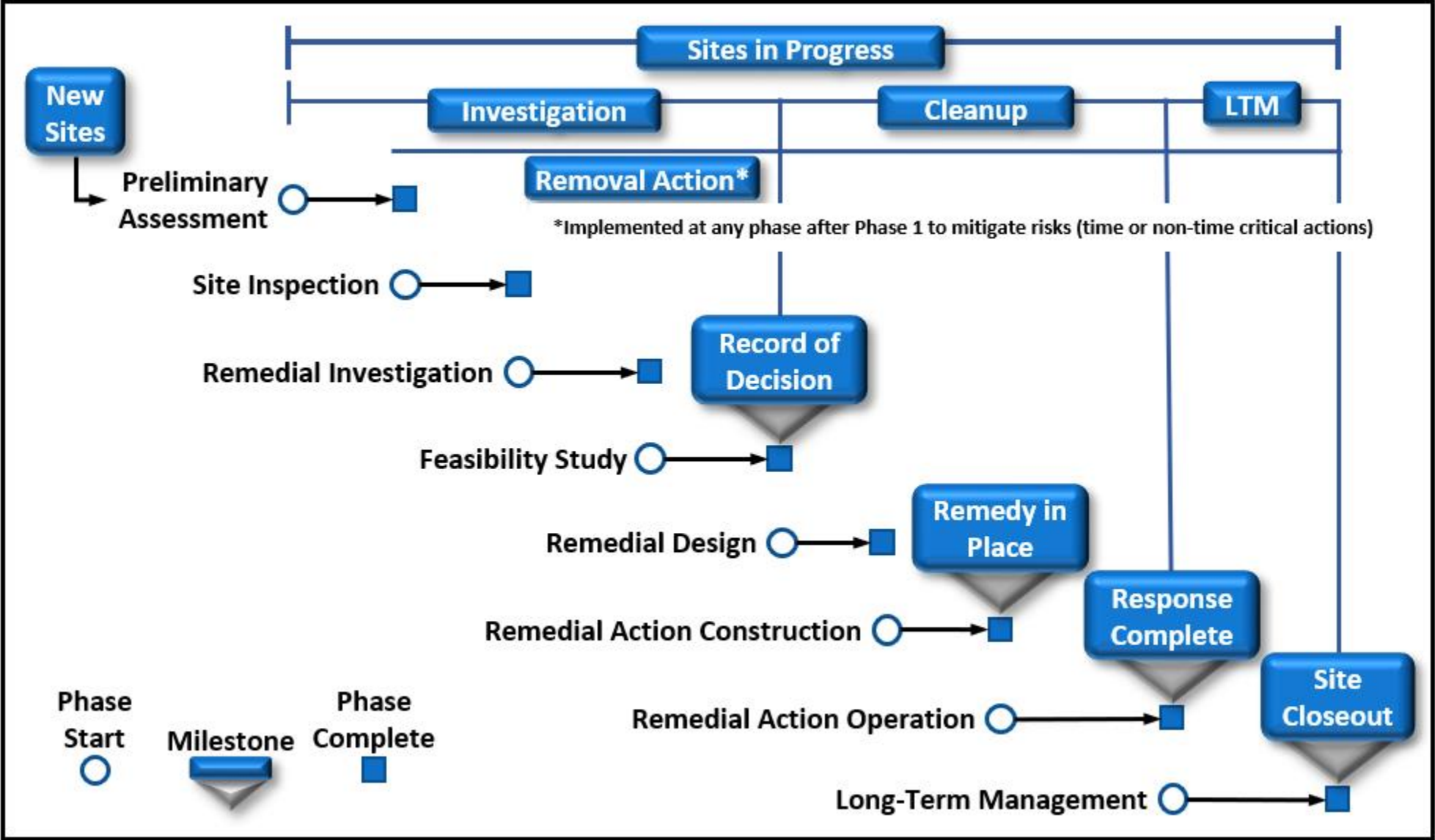
Follow us at: Michigan.gov/egleConnect

Mitigation and Remediation

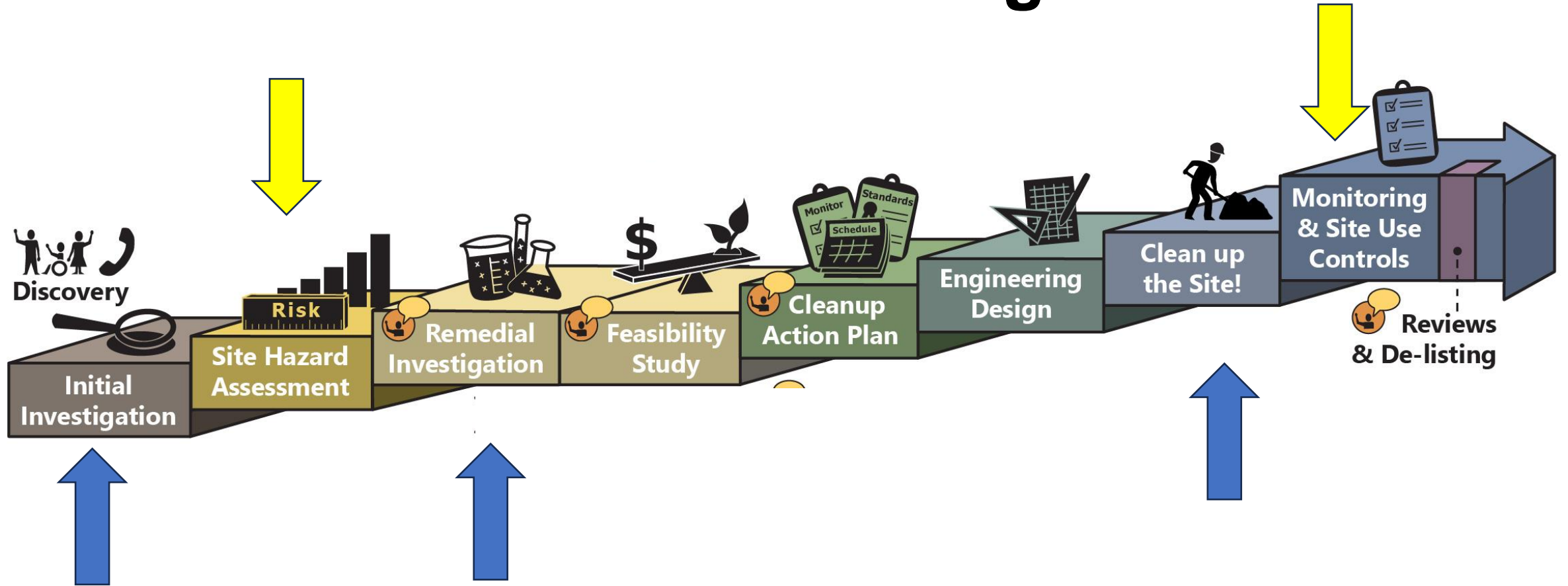
MPART

MICHIGAN PFAS ACTION RESPONSE TEAM

CERCLA – Superfund Process



General Environmental Investigation Process



Risk Management: Mitigation vs. Remediation

Mitigation: reducing the threat of potential risks or harmful effects of contamination to public health or the environment

Remediation: cleanup or removal of contaminants from an environmental media (i.e., groundwater, soils, surface water, air)

Mitigation:

Reducing the threat of potential risks or harmful effects of contamination.

- Usually refers to actions taken to protect public health
- Examples:
 - Extending municipal water
 - Drinking water filters in homes – Point of Use and whole house systems
 - Vapor barriers
 - Sheet piling along rivers
 - Lining storm sewers to prevent groundwater infiltration
- May not address any contamination

Remediation:

Cleanup or removal of contaminants from an environmental media (i.e., groundwater, soils, surface water, air)

- Usually refers to an engineered system to remove contaminants
 - Groundwater pump & treat systems
 - Excavation of soils
 - PFAS treatment technologies
- Usually, media-specific and may not address immediate public health concerns

Sometimes it's both!

- Injecting Plume Stop as a way to keep contamination from leaving the site and entering a water body; both Mitigation (of risk to fish) and remediation (of the groundwater)
- Radon (sub-slab depressurization) systems: protects homeowners from radon entering the homes and removes it from the subsurface.

MPART Updates

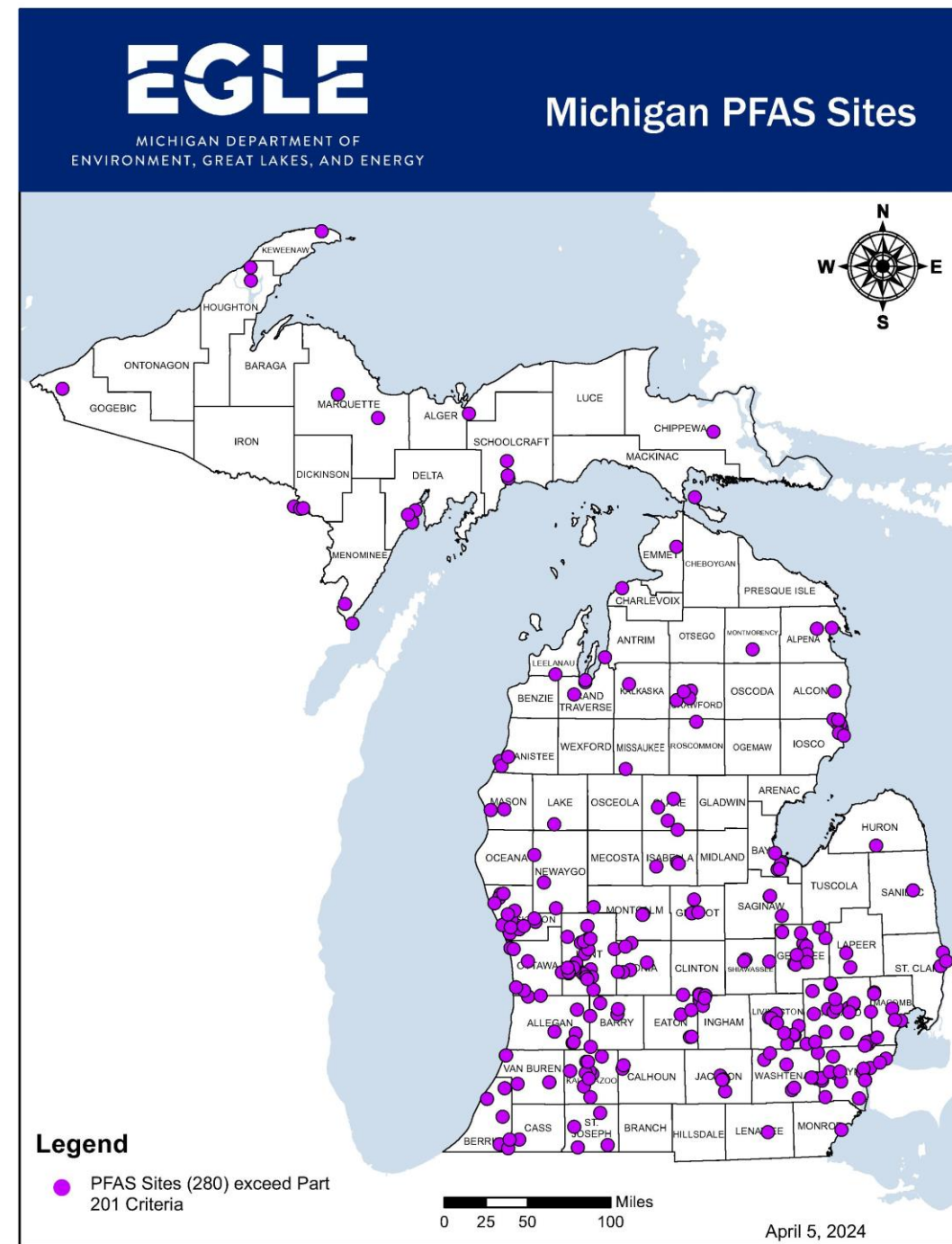
- EPA Announcement
- Special Meeting Thursday
- Town Hall Coordination
 - Otsego
 - White Pigeon
 - Grand Ledge (DMVA)
 - April 23rd and 24th

New MPART Sites / Areas of Interest

- Hamilton Area of Interest
Hamilton, Allegan County
- Menominee Warehouse Fire
transitioned from an Area of Interest to a MPART site
Menominee, Menominee County
- Grand Ledge National Guard Annex Property merged with Grand Ledge Army Aviation Support Facility and Armory Site
Grand Ledge, Eaton County

MPART

MICHIGAN PFAS ACTION RESPONSE TEAM



Next Meeting
May 14, 2024



MPART

MICHIGAN PFAS ACTION RESPONSE TEAM

MICHIGAN PFAS ACTION RESPONSE TEAM (MPART)

www.Michigan.gov/PfasResponse

The logo for the Michigan Department of Environment, Great Lakes, and Energy (EGLE). The letters 'EGLE' are rendered in a bold, sans-serif font. The 'E' and 'L' are green, while the 'G' and 'E' are blue.

MICHIGAN DEPARTMENT OF
ENVIRONMENT, GREAT LAKES, AND ENERGY



MPART

MICHIGAN PFAS ACTION RESPONSE TEAM