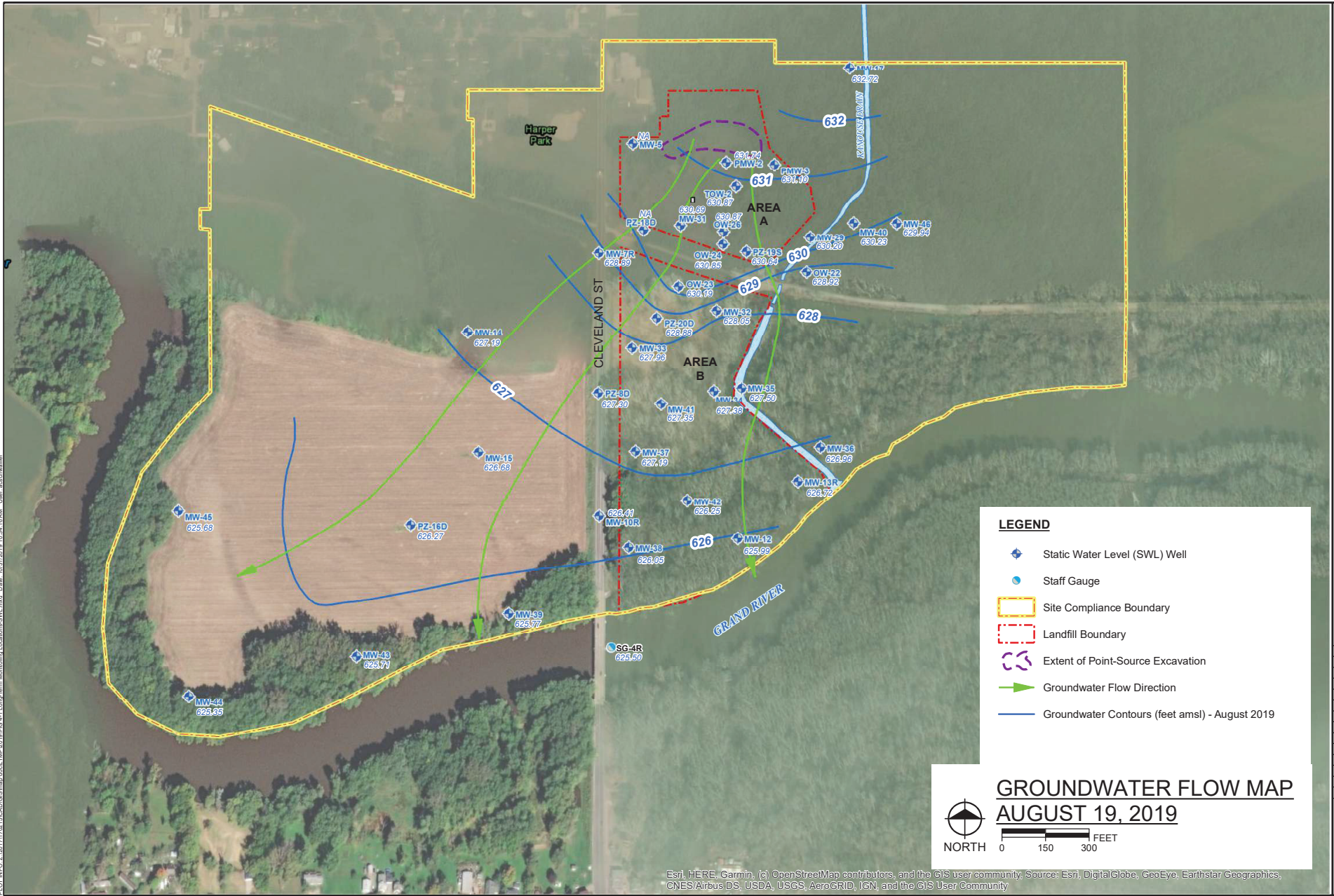


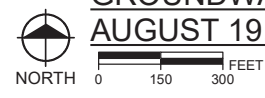
PLOT INFO: Z:\2017\1701\GIS\MapDocs\TM2019\FG\_4-1\_Landfill\_Monitoring\_Locations\_SWL.mxd, Date: 10/31/2019 10:54:16 AM, User: kschuchler



**LEGEND**

- ◆ Static Water Level (SWL) Well
- Staff Gauge
- Site Compliance Boundary
- Landfill Boundary
- ⌀ Extent of Point-Source Excavation
- ➔ Groundwater Flow Direction
- Groundwater Contours (feet amsl) - August 2019

**GROUNDWATER FLOW MAP  
AUGUST 19, 2019**



Esri, HERE, Garmin, (c) OpenStreetMap contributors, and the GIS user community, Source: Esri, DigitalGlobe, GeoEye, Earthstar Geographics, CNES/Airbus DS, USDA, USGS, AeroGRID, IGN, and the GIS User Community

Hard copy is intended to be 11"x17" when plotted. Scale(s) indicated and graphic quality may not be accurate for any other size.

PROJECT NO.  
170215

FIGURE NO.

**4-1**  
© Copyright 2019  
All Rights Reserved