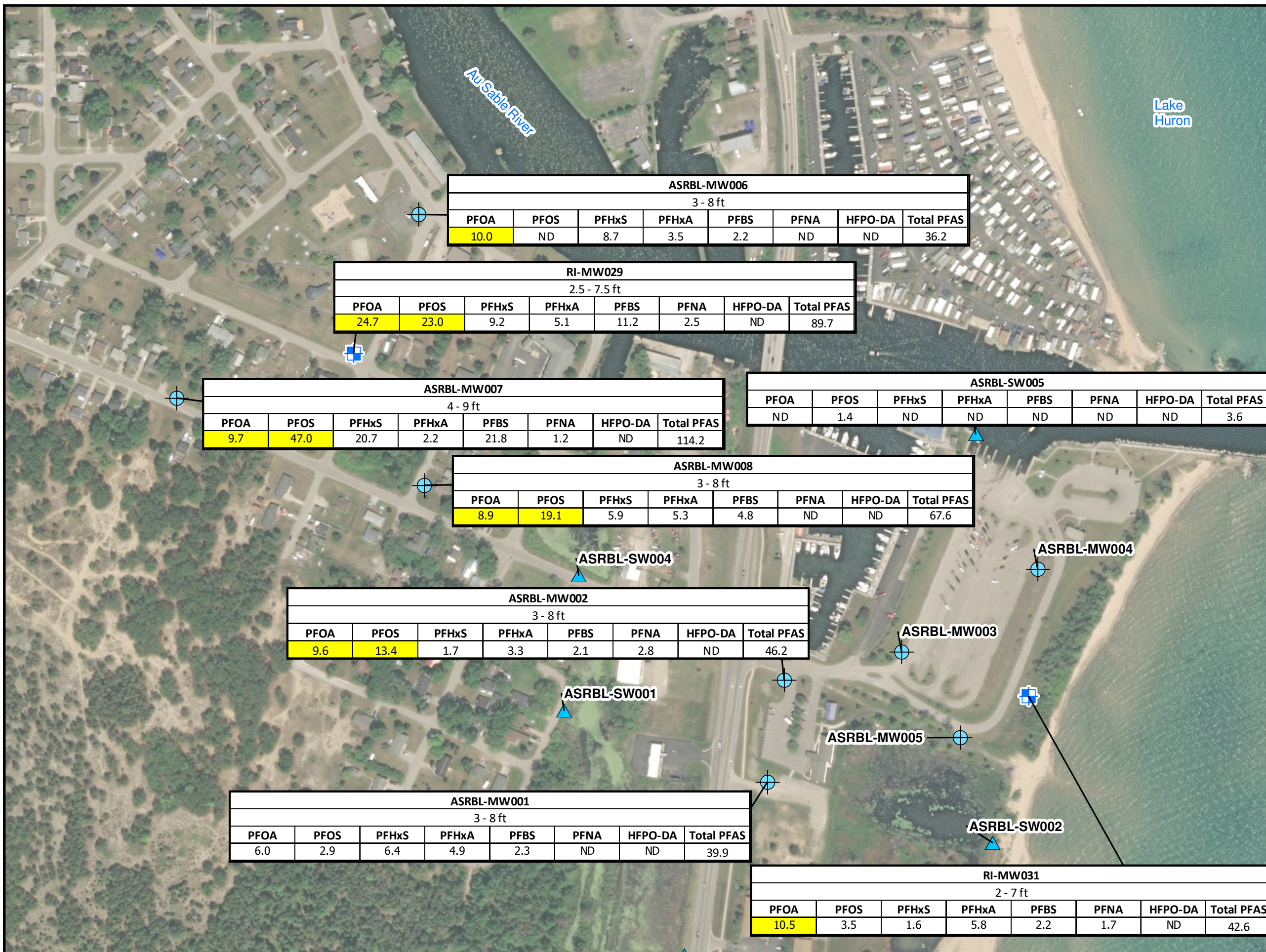


Legend

- Temporary Monitoring Well
- Wurtsmith RI Monitoring Well
- Surface Water Sample

ID	
Well Screen Depth Interval	
Analyte	Total PFAS
Result (ppt)	Result (ppt)

ND = non-detect
 Yellow highlight = Exceedance of Michigan Part 201 criteria for monitoring well samples or Michigan Rule 57 criteria for surface water samples
 * No results = not sampled



ASRBL-MW006							
3 - 8 ft							
PFOA	PFOS	PFHxS	PFHxA	PFBS	PFNA	HFPO-DA	Total PFAS
10.0	ND	8.7	3.5	2.2	ND	ND	36.2

RI-MW029							
2.5 - 7.5 ft							
PFOA	PFOS	PFHxS	PFHxA	PFBS	PFNA	HFPO-DA	Total PFAS
24.7	23.0	9.2	5.1	11.2	2.5	ND	89.7

ASRBL-MW007							
4 - 9 ft							
PFOA	PFOS	PFHxS	PFHxA	PFBS	PFNA	HFPO-DA	Total PFAS
9.7	47.0	20.7	2.2	21.8	1.2	ND	114.2

ASRBL-SW005							
PFOA	PFOS	PFHxS	PFHxA	PFBS	PFNA	HFPO-DA	Total PFAS
ND	1.4	ND	ND	ND	ND	ND	3.6

ASRBL-MW008							
3 - 8 ft							
PFOA	PFOS	PFHxS	PFHxA	PFBS	PFNA	HFPO-DA	Total PFAS
8.9	19.1	5.9	5.3	4.8	ND	ND	67.6

ASRBL-MW002							
3 - 8 ft							
PFOA	PFOS	PFHxS	PFHxA	PFBS	PFNA	HFPO-DA	Total PFAS
9.6	13.4	1.7	3.3	2.1	2.8	ND	46.2

ASRBL-MW001							
3 - 8 ft							
PFOA	PFOS	PFHxS	PFHxA	PFBS	PFNA	HFPO-DA	Total PFAS
6.0	2.9	6.4	4.9	2.3	ND	ND	39.9

RI-MW031							
2 - 7 ft							
PFOA	PFOS	PFHxS	PFHxA	PFBS	PFNA	HFPO-DA	Total PFAS
10.5	3.5	1.6	5.8	2.2	1.7	ND	42.6

GROUNDWATER AND SURFACE WATER SAMPLING OCTOBER 2021

AU SABLE TOWNSHIP
 IOSCO COUNTY,
 MICHIGAN

