

PFOA (ppt)

Residential Wells

- Non-Detect (135)
- >ND - 8 (162)
- >8 (51)

Groundwater Samples

- Non-Detect (389)
- >ND - 8 (394)
- >8 (645)

Suspected On-Base PFAS Source Areas

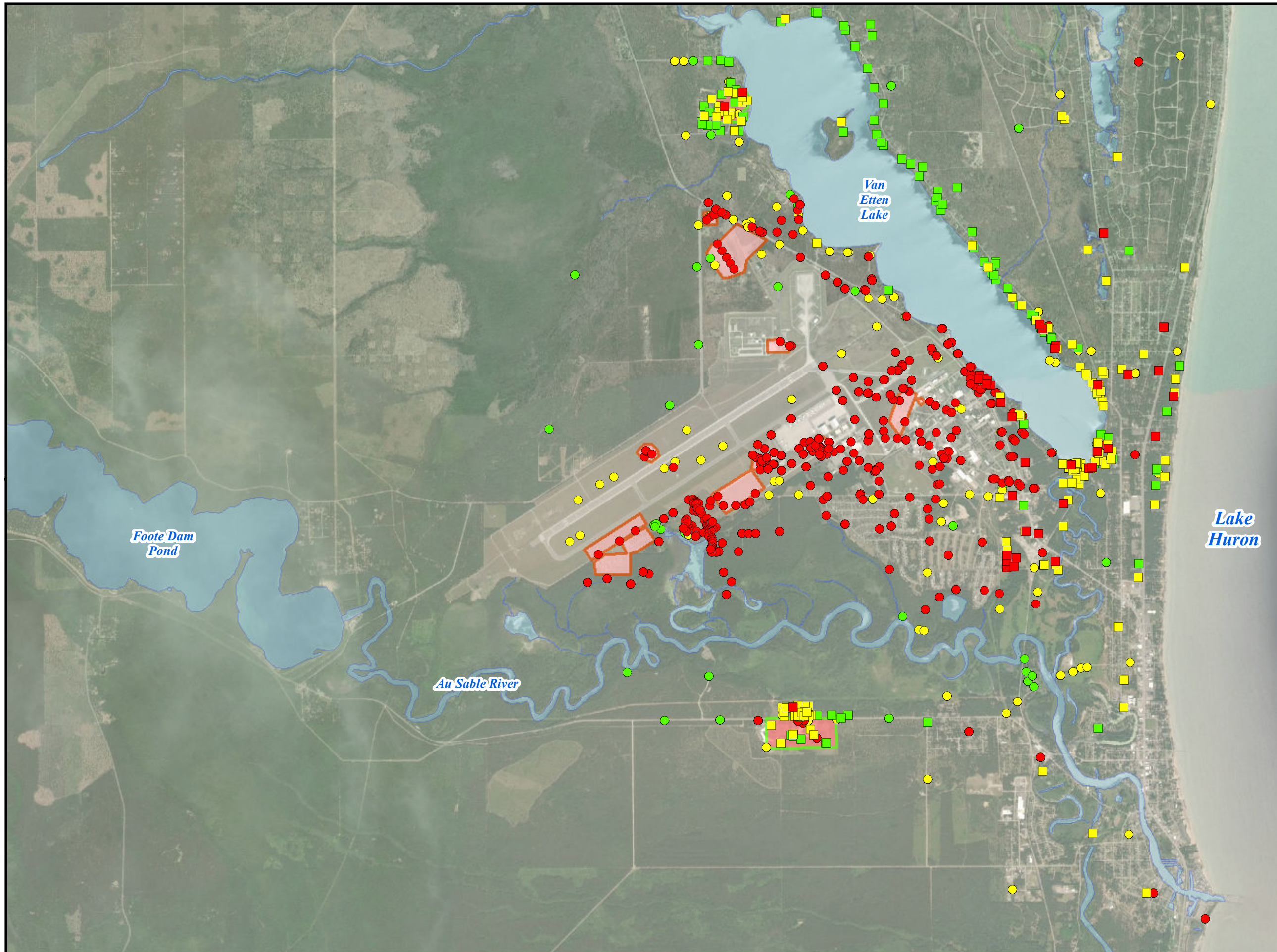
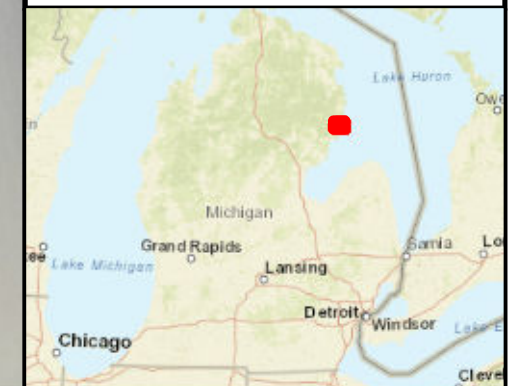
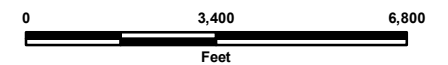
- On-Site Source
- Off-Site Source

Notes:

1. Michigan Part 201 Criteria for PFOA >8 ppt
2. Analytical results shown are the highest detected concentrations through October 2019.

GROUNDWATER AND RESIDENTIAL SAMPLING RESULTS PFOA

FORMER WURTSMITH AIR FORCE BASE & OSCODA AREA IOSCO COUNTY, MICHIGAN



PFOS (ppt)

Residential Wells

- Non-Detect (189)
- >ND - 16 (140)
- >16 (19)

Groundwater Samples

- Non-Detect (499)
- >ND - 16 (335)
- >16 (594)

Suspected On-Base PFAS Source Areas

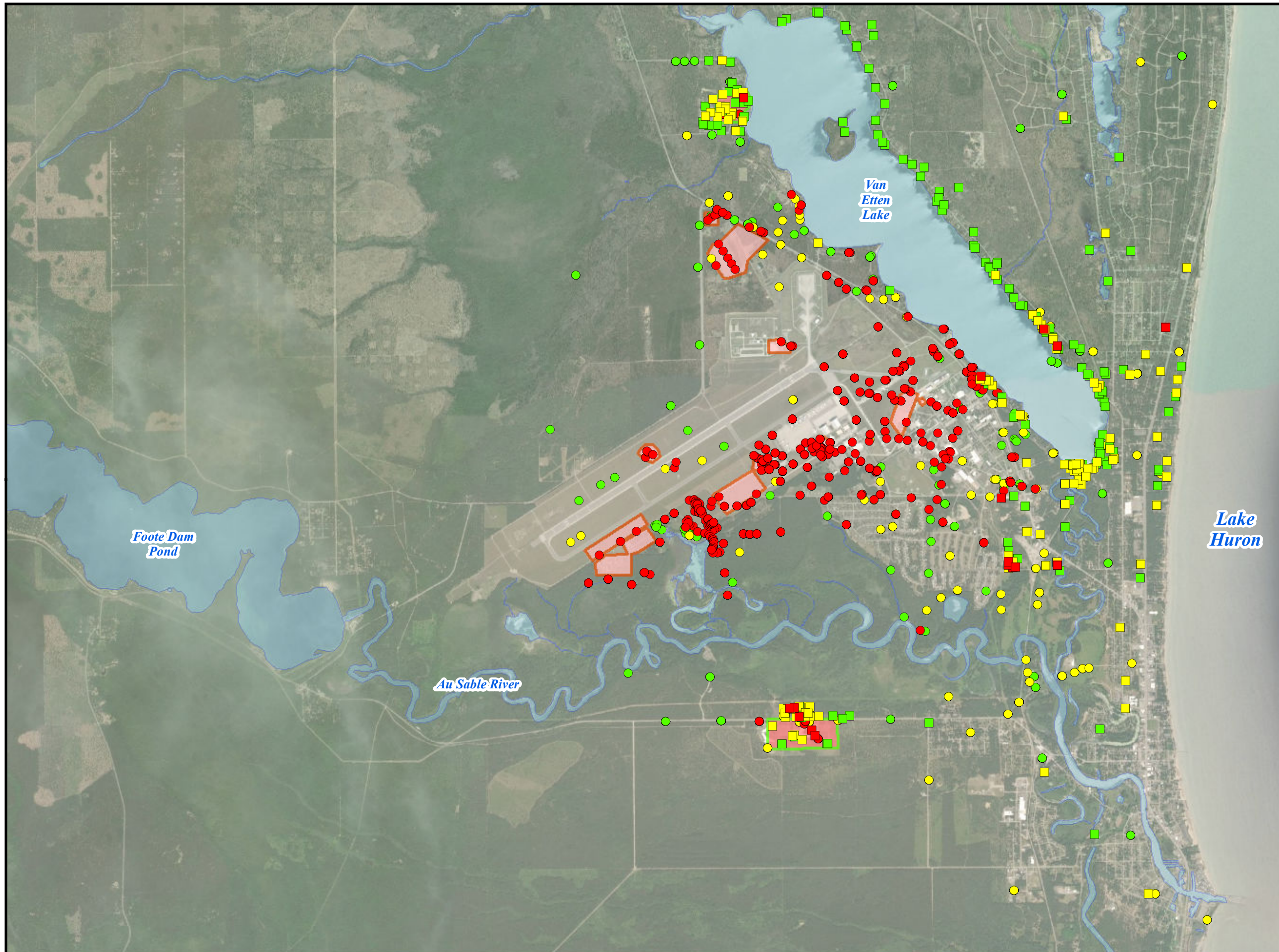
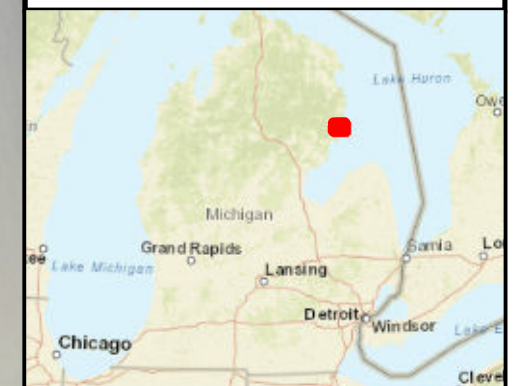
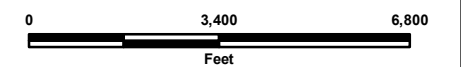
- On-Site Source
- Off-Site Source

Notes:

1. Michigan Part 201 Criteria for PFOS >16 ppt
2. Analytical results shown are the highest detected concentrations through October 2019.

GROUNDWATER AND RESIDENTIAL SAMPLING RESULTS PFOS

FORMER WURTSMITH AIR FORCE BASE & OSCODA AREA
IOSCO COUNTY, MICHIGAN



PFBS (ppt)

Residential Wells

- Non-Detect (178)
- >ND - 420 (170)
- >420 (0)

Groundwater Samples

- Non-Detect (617)
- >ND - 420 (716)
- >420 (39)

Suspected On-Base PFAS Source Areas

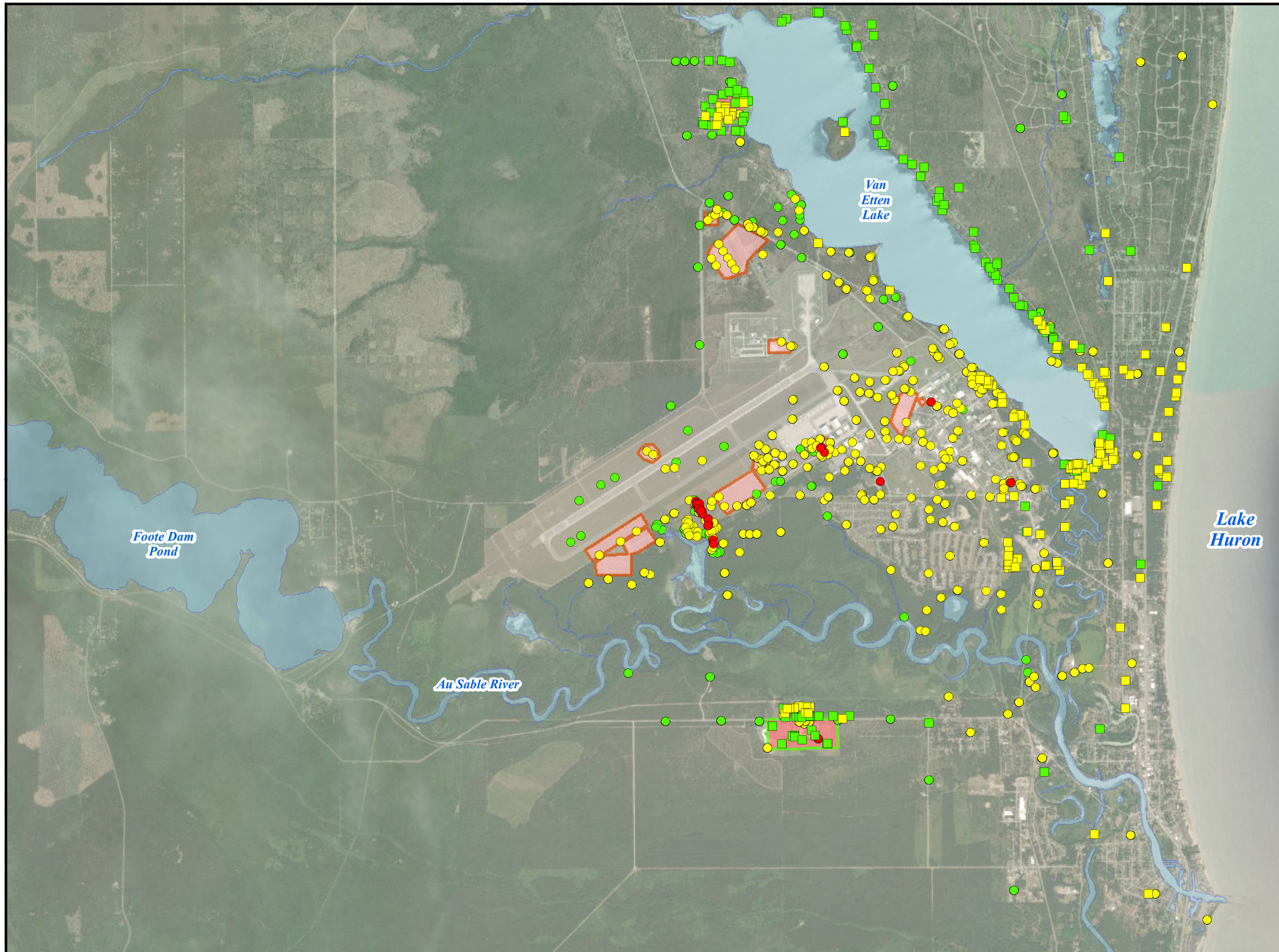
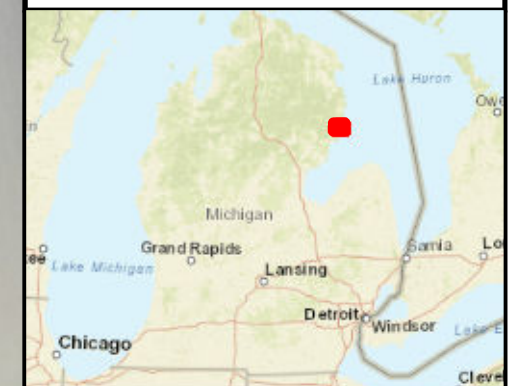
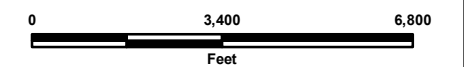
- On-Site Source
- Off-Site Source

Notes:

1. Michigan Part 201 Criteria for PFBS >420 ppt
2. Analytical results shown are the highest detected concentrations through October 2019.

GROUNDWATER AND RESIDENTIAL SAMPLING RESULTS PFBS

FORMER WURTSMITH AIR FORCE BASE & OSCODA AREA IOSCO COUNTY, MICHIGAN



PFHxS (ppt)

Residential Wells

- Non-Detect (128)
- >ND - 51 (192)
- >51 (28)

Groundwater Samples

- Non-Detect (308)
- >ND - 51 (548)
- >51 (516)

Suspected On-Base PFAS Source Areas

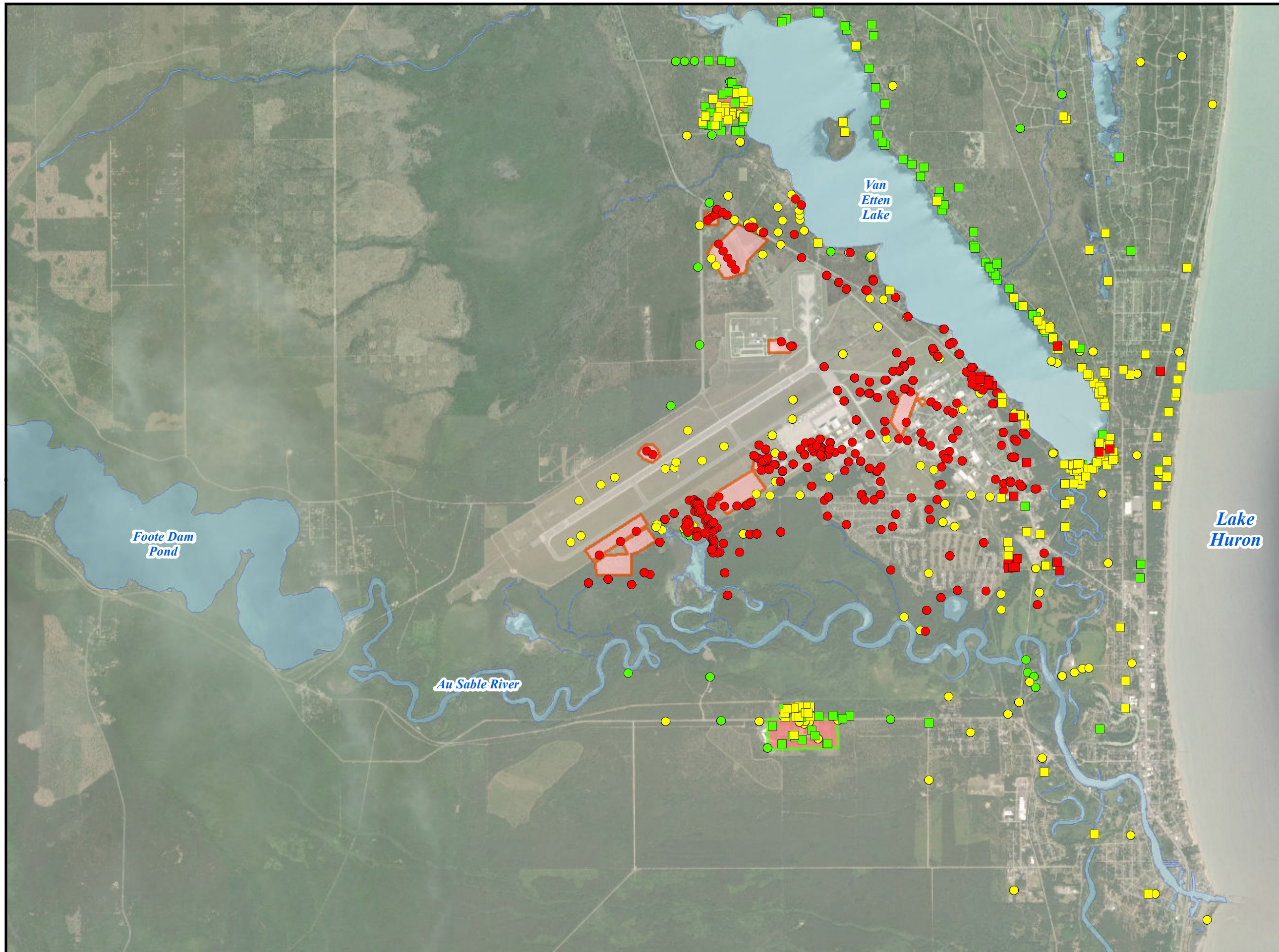
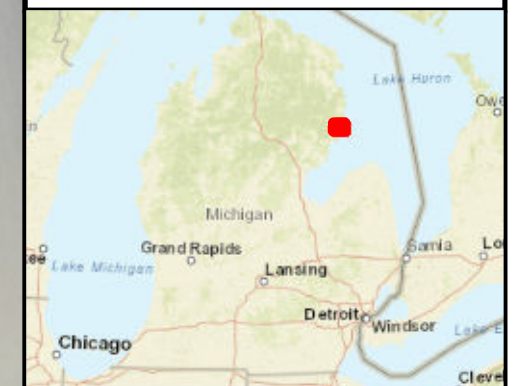
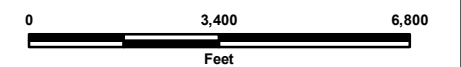
- On-Site Source
- Off-Site Source

Notes:

1. Michigan Part 201 Criteria for PFHxS >51 ppt
2. Analytical results shown are the highest detected concentrations through October 2019.

GROUNDWATER AND RESIDENTIAL SAMPLING RESULTS PFHxS

FORMER WURTSMITH AIR FORCE BASE & OSCODA AREA
IOSCO COUNTY, MICHIGAN



PFHxA (ppt)

Residential Wells

- Non-Detect (154)
- >ND - 400,000 (194)
- >400,000 (0)

Groundwater Samples

- Non-Detect (503)
- >ND - 400,000 (869)
- >400,000 (0)

Suspected On-Base PFAS Source Areas

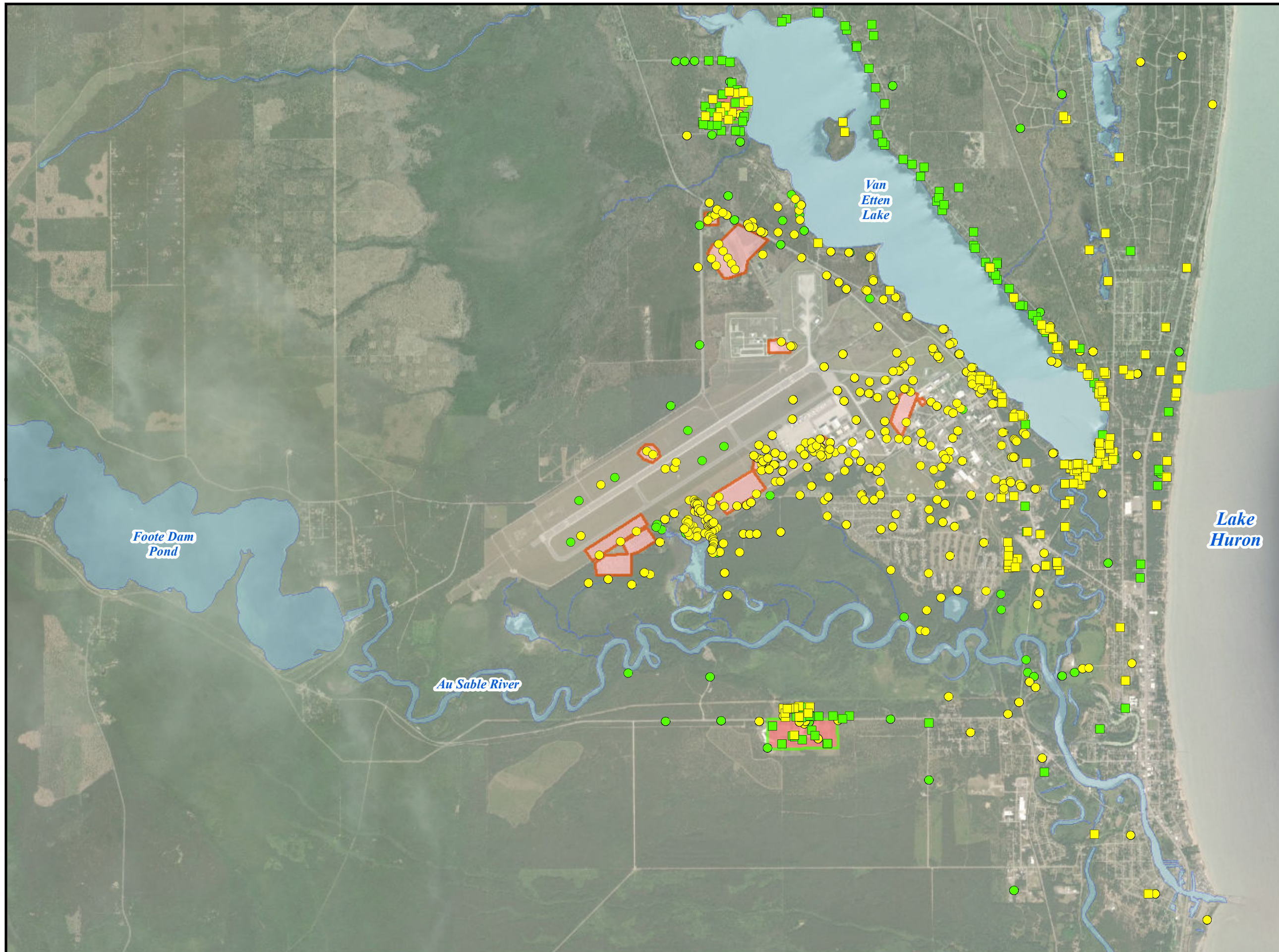
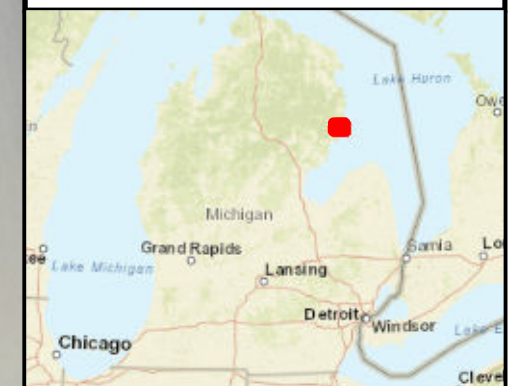
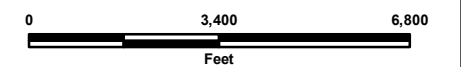
- On-Site Source
- Off-Site Source

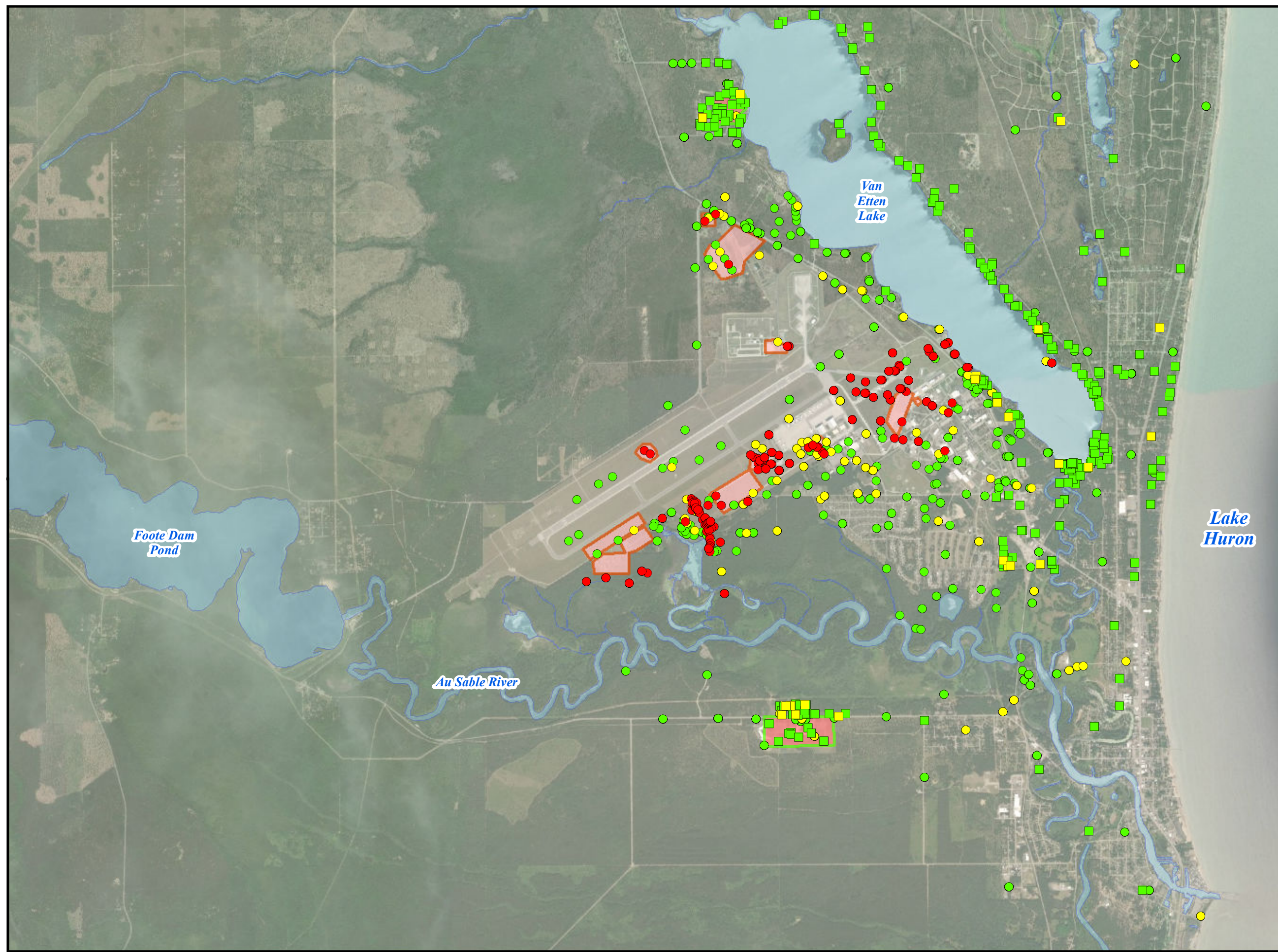
Notes:

1. Michigan Part 201 Criteria for PFHxA >400,000 ppt
2. Analytical results shown are the highest detected concentrations through October 2019.

GROUNDWATER AND RESIDENTIAL SAMPLING RESULTS PFHxA

FORMER WURTSMITH AIR FORCE BASE & OSCODA AREA
IOSCO COUNTY, MICHIGAN





PFNA (ppt)

Residential Wells

- Non-Detect (323)
- >ND - 6 (25)
- >6 (0)

Groundwater Samples

- Non-Detect (988)
- >ND - 6 (180)
- >6 (204)

Suspected On-Base PFAS Source Areas

- On-Site Source
- Off-Site Source

Notes:

1. Michigan Part 201 Criteria for PFNA >6 ppt
2. Analytical results shown are the highest detected concentrations through October 2019.

GROUNDWATER AND RESIDENTIAL SAMPLING RESULTS PFNA

FORMER WURTSMITH AIR FORCE BASE & OSCODA AREA
IOSCO COUNTY, MICHIGAN

0 3,400 6,800
Feet

