

Plot Info: Z:\2018\181260\CAD\GIS\map.docx\CSM 2020\FIG06 SurfaceWaterFeatures.mxd Date: 2/14/2020 4:21:56 PM User: aschwallier

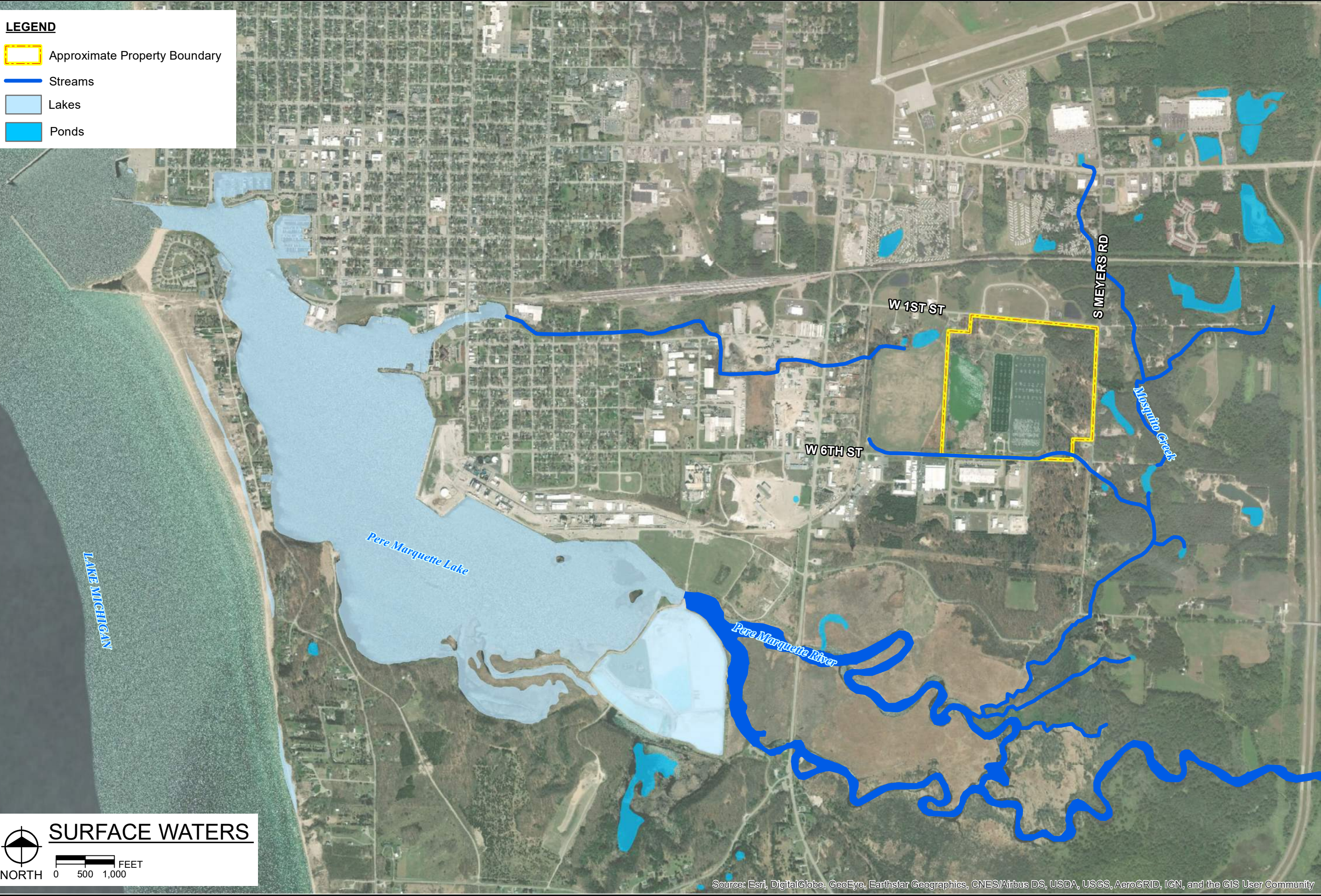
LEGEND

- Approximate Property Boundary
- Streams
- Lakes
- Ponds

SURFACE WATERS

NORTH

0 500 1,000 FEET



Source: Esri, DigitalGlobe, GeoEye, Earthstar Geographics, CNES/Airbus DS, USDA, USGS, AeroGRID, IGN, and the GIS User Community

City of Ludington WWTP
Ludington, Michigan

Hydrogeological Investigation Report

PROJECT NO.
181260

FIGURE NO.
6

Hard copy is intended to be 11"x17" when plotted. Scale(s) indicated and graphic quality may not be accurate for any other size.