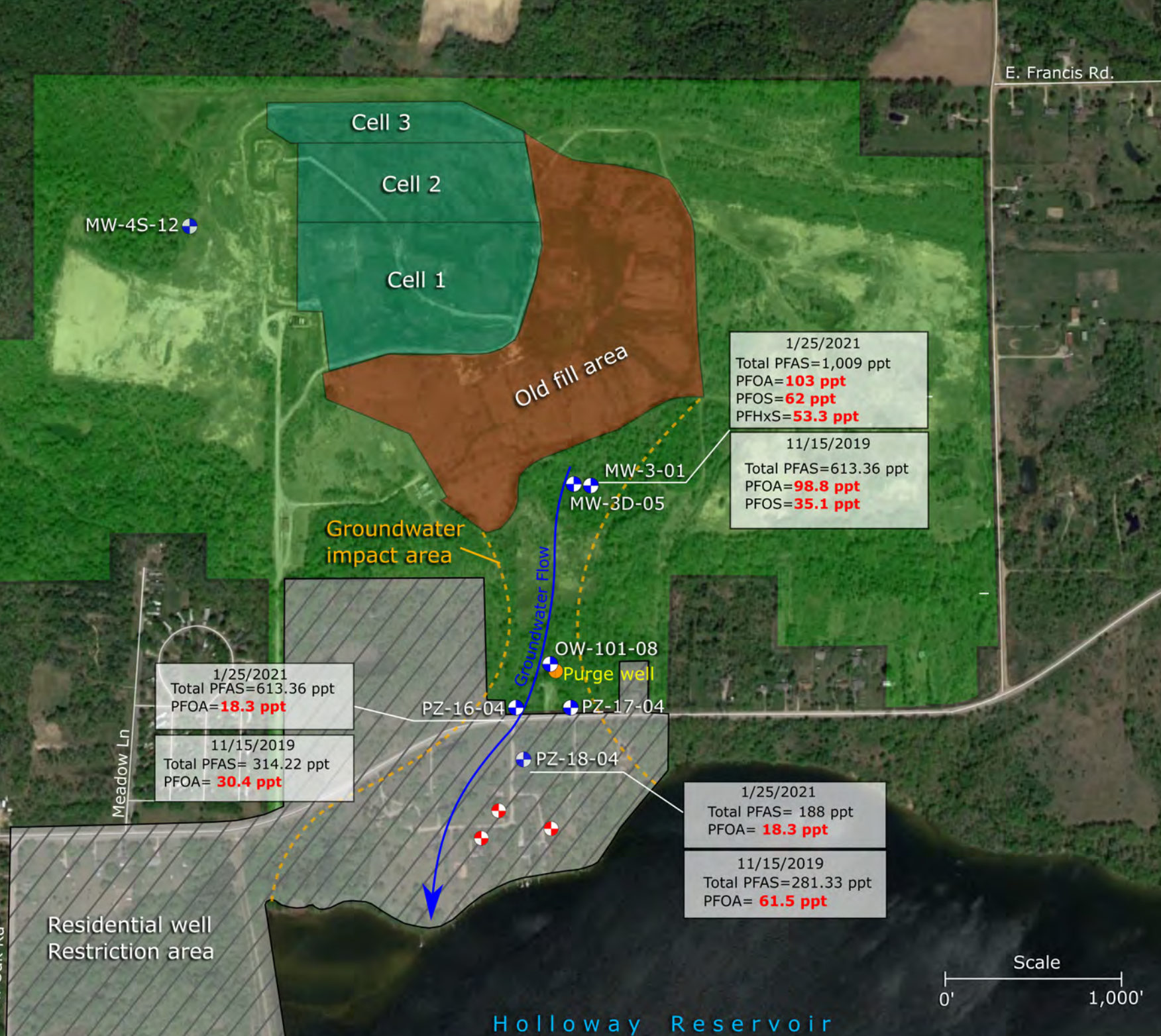




**MCLS for exceeded compounds**  
 PFOA - 8 ppt  
 PFOS - 16 ppt  
 PFHxS - 51 ppt



1/25/2021  
 Total PFAS=1,009 ppt  
 PFOA=**103 ppt**  
 PFOS=**62 ppt**  
 PFHxS=**53.3 ppt**

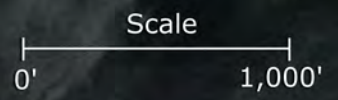
11/15/2019  
 Total PFAS=613.36 ppt  
 PFOA=**98.8 ppt**  
 PFOS=**35.1 ppt**

1/25/2021  
 Total PFAS=613.36 ppt  
 PFOA=**18.3 ppt**

11/15/2019  
 Total PFAS= 314.22 ppt  
 PFOA= **30.4 ppt**

1/25/2021  
 Total PFAS= 188 ppt  
 PFOA= **18.3 ppt**

11/15/2019  
 Total PFAS=281.33 ppt  
 PFOA= **61.5 ppt**



**Richfield Sanitary Landfill**  
 11145 East Mt. Morris Rd  
 Richfield Township, MI, 48423

- Sampled monitor well location
- Sampled residential well location
- Residential well restriction area
- Old fill area (waste, unlined)
- Property Boundary
- New waste cells (lined)

ND= Non-detect  
 ppt= Parts per trillion  
**XXX ppt** = Exceeds or equals current drinking water quality criteria  
**XXX ppt** = Between ND and criteria

