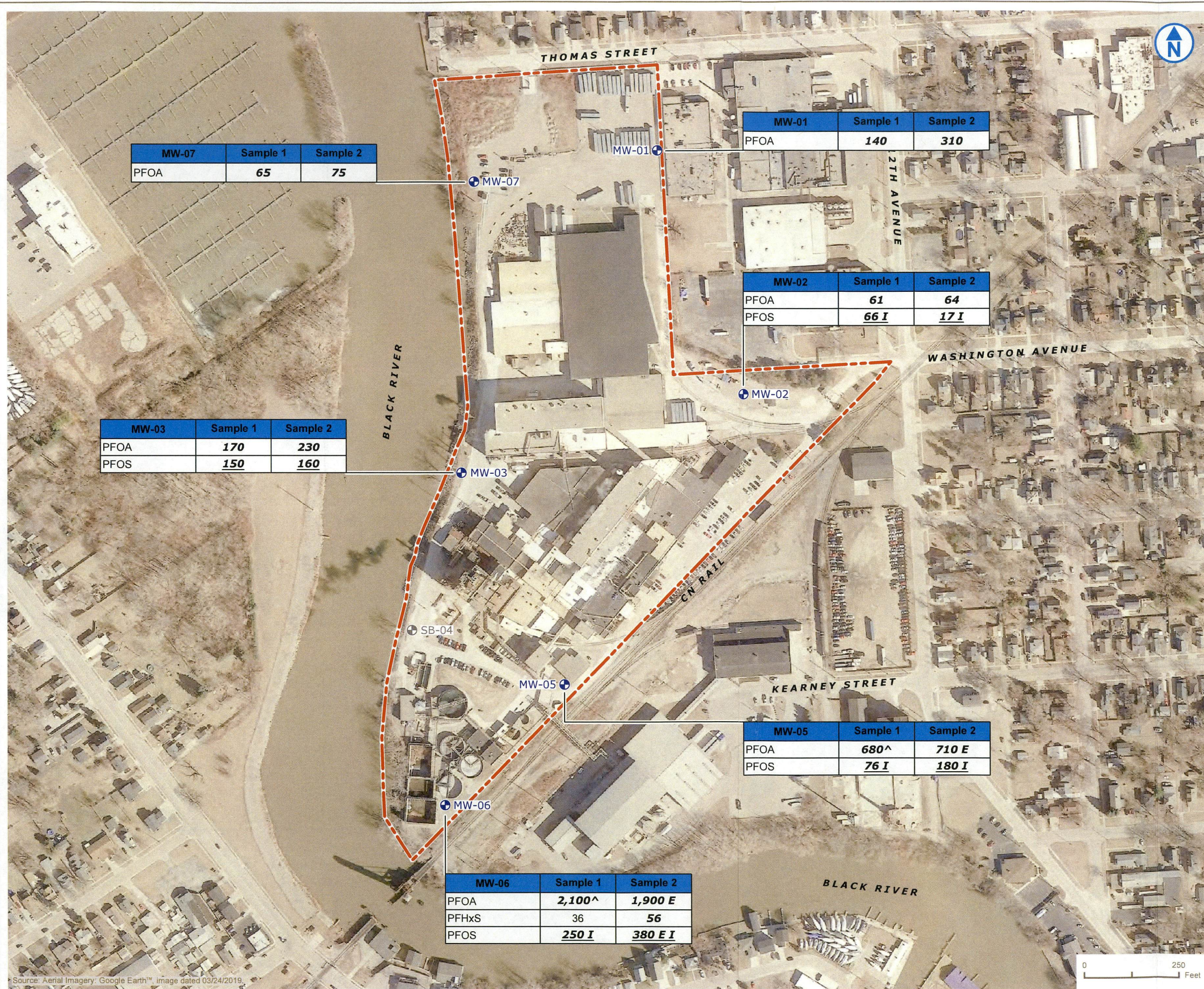


C:\Users\pramirez\OneDrive - Ramboll\CAD\1690018272_Domtar_PHI\2021-03\GW_Sampling Results Exceeding Part 201 Criteria.dwg
PROJECT: 1690018272 DATED: 3/11/2021 DESIGNER: APR



LEGEND

- PROPERTY BOUNDARY (APPROXIMATE)
- ⊕ MONITORING WELL
- ⊙ ABANDONED LOCATION - NO SAMPLE COLLECTED

Sample Location	Sample #
Analyte	Result in ng/L
At or exceeds residential DW Protection criterion	BOLD
At or exceeds nonresidential DW Protection criterion	<i>Italics</i>
At or exceeds GSI criterion	<u>underlined</u>

Notes:

PFOA = Perfluorooctanoic Acid

PFOS = Perfluorooctanesulfonic Acid

PFHxS = Perfluorohexanesulfonic Acid

E = Result exceeded calibration range

I = Value is estimated maximum possible concentration (EMPC)

^ = Sample was diluted and reanalyzed for this compound

-- = Groundwater sample not analyzed for constituent

GROUNDWATER SAMPLING RESULTS EXCEEDING PART 201 CRITERIA

E.B. EDDY PAPER, INC.
1700 WASHINGTON AVENUE
PORT HURON, MICHIGAN

RAMBOLL US CONSULTING, INC.
A RAMBOLL COMPANY

