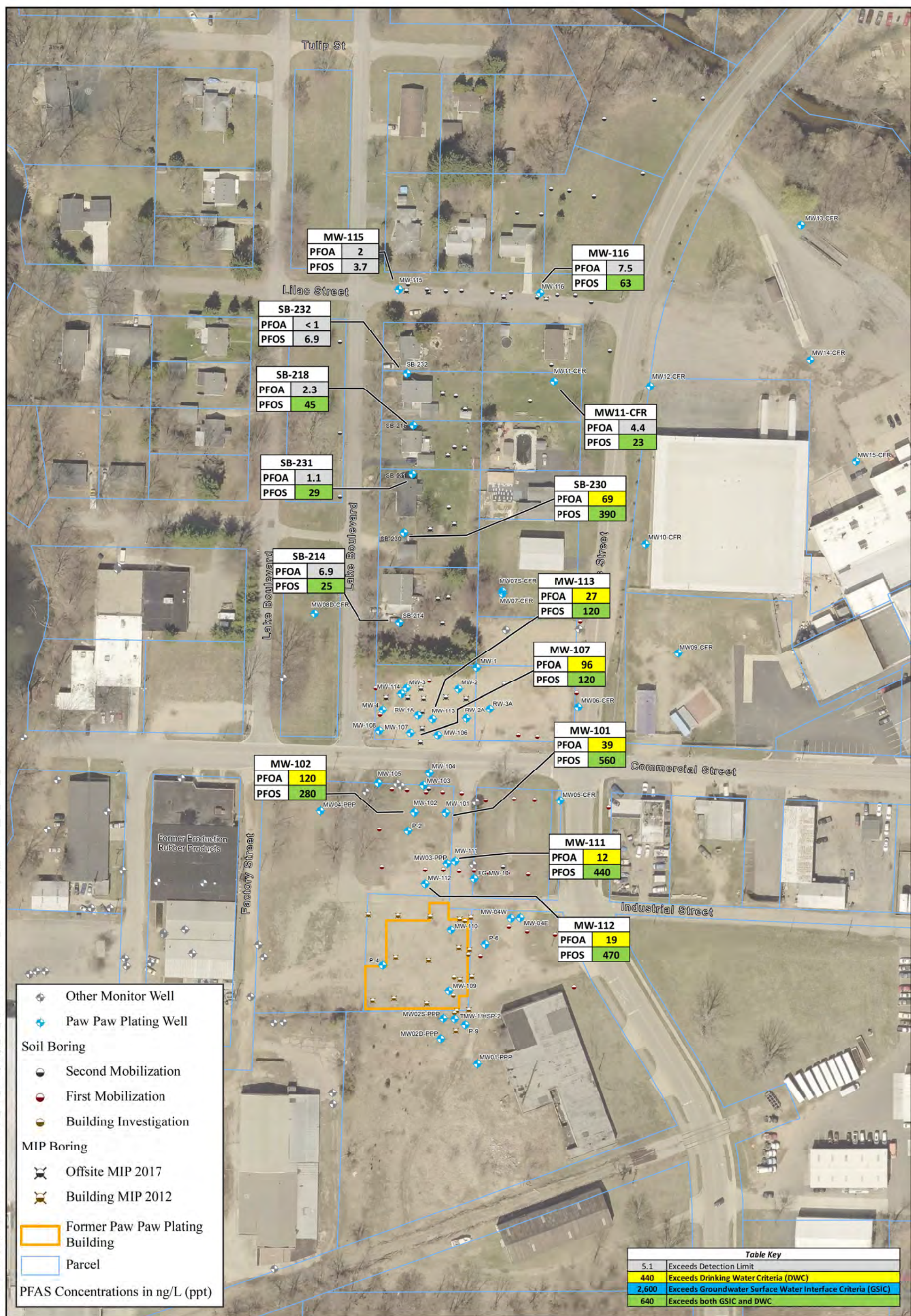


Document Path: X:\Projects\GFL\2009\0941\628008 Paw\_Paw\_Plating\Maps\_and\_Figures\GIS\MXDs\PPP\_2020-11\_Sampling\_MXD\Fig\_07\_PFAAS\_in\_GW.mxd

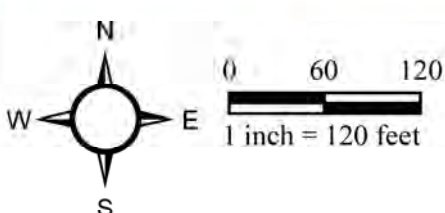


**Legend**

- Other Monitor Well
- Paw Paw Plating Well
- Soil Boring
- Second Mobilization
- First Mobilization
- Building Investigation
- MIP Boring
- Offsite MIP 2017
- Building MIP 2012
- Former Paw Paw Plating Building
- Parcel

PFAS Concentrations in ng/L (ppt)

Table Key	
5.1	Exceeds Detection Limit
440	Exceeds Drinking Water Criteria (DWC)
2,600	Exceeds Groundwater Surface Water Interface Criteria (GSIC)
640	Exceeds both GSIC and DWC



**Figure 7**  
**PFAS in Groundwater November 2020**  
**Former Paw Paw Plating**

139 Commercial Street  
 Paw Paw, MI 49079  
 Michigan Department of Environment, Great Lakes, and Energy

