



Marine Safety Information Bulletin

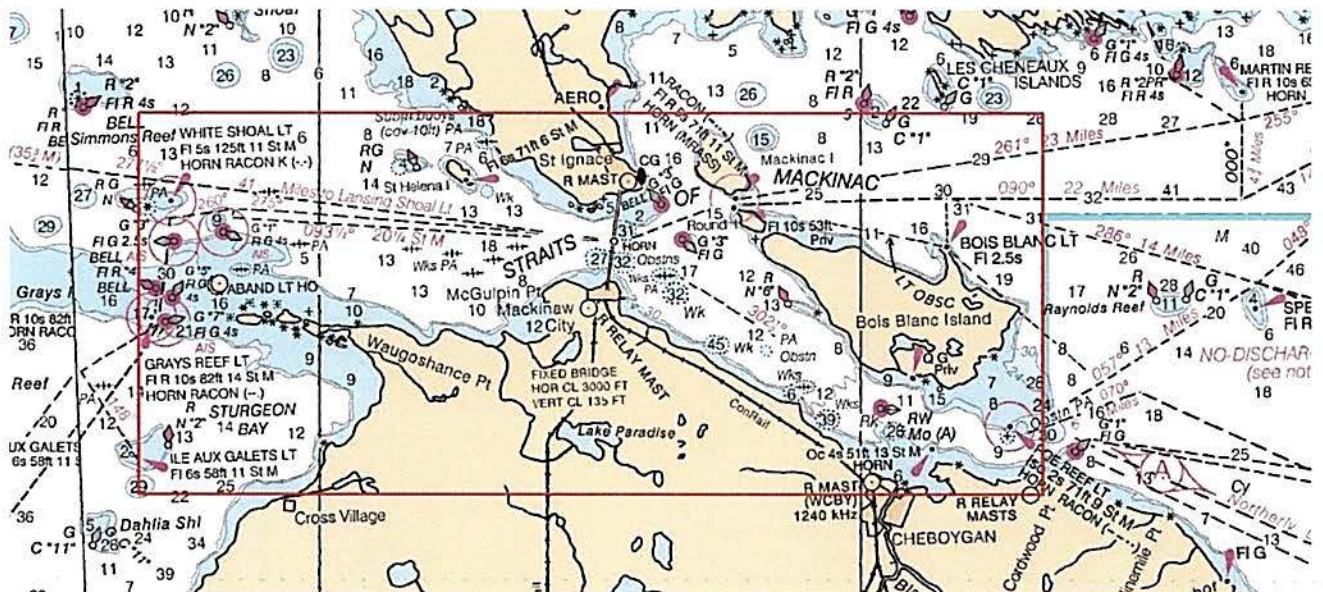
Bulletin Number: 001-18

Date: 22 October 2018

Subject: Coast Guard Regulated Navigation Area; Straits of Mackinac

On September 24, 2018, Ninth Coast Guard District Commander signed 33 CFR 165.944, a regulated navigation area (RNA) which prohibits certain persons and vessels from anchoring or loitering within defined areas of the Straits of Mackinac. The RNA is in effect starting on October 31, 2018. This information bulletin prescribes further specific conditions for notification to the Captain of the Port (COTP), Sault Sainte Marie.

The RNA encompasses all navigable waters of the Straits of Mackinac bounded by longitudes 084°20' W and 085°10' W and latitudes 045°39' N and 045°54' N (NAD 83), including Grays Reef Passage, the South Channel between Bois Blanc Island, MI and Cheboygan, MI, and the waters between Mackinac Island, MI and St. Ignace, MI.



NOAA Chart 14881 with a red box marking the boundary of the RNA

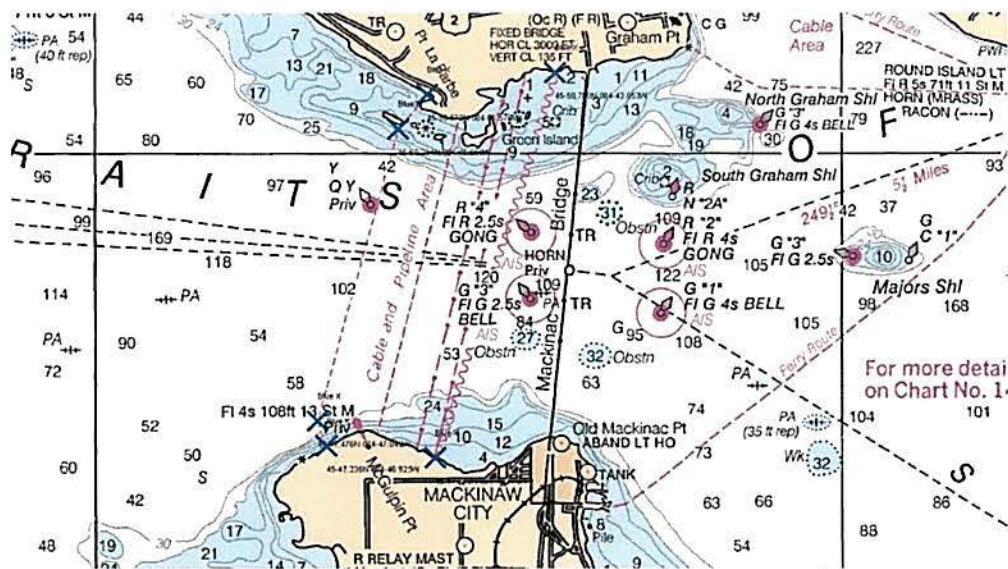
This regulation applies to:

- 1) Vessels of 40 meters (approx. 131 feet) or more in length, while navigating;
- 2) Towing vessels of 20 meters (approx. 65 feet) or more in length, while engaged in towing another

vessel astern, alongside or by pushing ahead;

- 3) Vessels certificated to carry 50 or more passengers for hire, when engaged in trade; and
- 4) Each dredge or floating plant

In accordance with 33 CFR 165.944, the COTP determined that **vessels are prohibited from anchoring within one nautical mile of any charted submerged cable and/or pipeline areas within the confines of the RNA**, except when expressly permitted by the COTP or a designated representative via VHF 16 or telephone 906-635-3319. These charted areas are clearly marked on NOAA Charts 14880 and 14881. The below graphic illustrates one of the submerged cable and pipeline areas present in the confines of the RNA; refer to NOAA Charts 14880 and 14881 to view other charted submerged cable and pipeline areas within this RNA.



NOAA chart 14880 depicts submerged cables and pipelines, outlined with the blue x's.

In accordance with 33 CFR 165.944, the COTP determined that vessels desiring to anchor within the confines of the RNA, but outside one nautical mile of charted submerged cable and pipeline areas, must contact the COTP or a designated representative one hour in advance, via VHF 16 or telephone 906-635-3319, when one or more of the following conditions exist:

- 1) Sustained winds greater than 35 knots;
- 2) When ice is present; and/or
- 3) Visibility is less than $\frac{1}{4}$ nautical mile

Vessels transiting through the RNA must make a direct passage. No vessel may anchor or loiter within the RNA at any time without the expressed permission of the COTP or a designated representative. Loiter means to linger aimlessly in or about a place making purposeless stops in the course of a trip, journey, or errand. Loitering does not include brief stops for sight-seeing, ferrying, or tourism purposes.

Additionally, the owner, operator, charterer, master or person directing the movement of a vessel desiring to anchor within the prescribed RNA for the **purposes of work, dredging, or surveying** must receive permission from the COTP or a designated representative a minimum of 72 hours in

advance of the desired activity. Vessels engaged in activities, such as tourism, ferrying, or sightseeing, which require anchoring, within the RNA boundaries, but not within charted submerged cables and/or pipelines areas, may request a waiver from the COTP.

Vessels who receive permission to anchor, shall notify the COTP or a designated representative no less than 15 minutes prior to getting underway via VHF-16 or telephone 906-635-3319.

In an emergency, any vessel may deviate from this regulation to the extent necessary to avoid endangering the safety of persons, the environment, and/or property. If deviation from the regulation is necessary, the master or his designee shall inform the Coast Guard as soon as it is practicable to do so.

For further information contact Lt. j.g. Sean Murphy, Coast Guard Sector Sault Sainte Marie, Waterways Management Branch Chief at (906)-635-3223.

A handwritten signature in blue ink, appearing to read 'P. S. Nelson', with a long horizontal flourish extending to the right.

P. S. NELSON

Captain, U.S. Coast Guard
Captain of the Port Sault Sainte Marie
