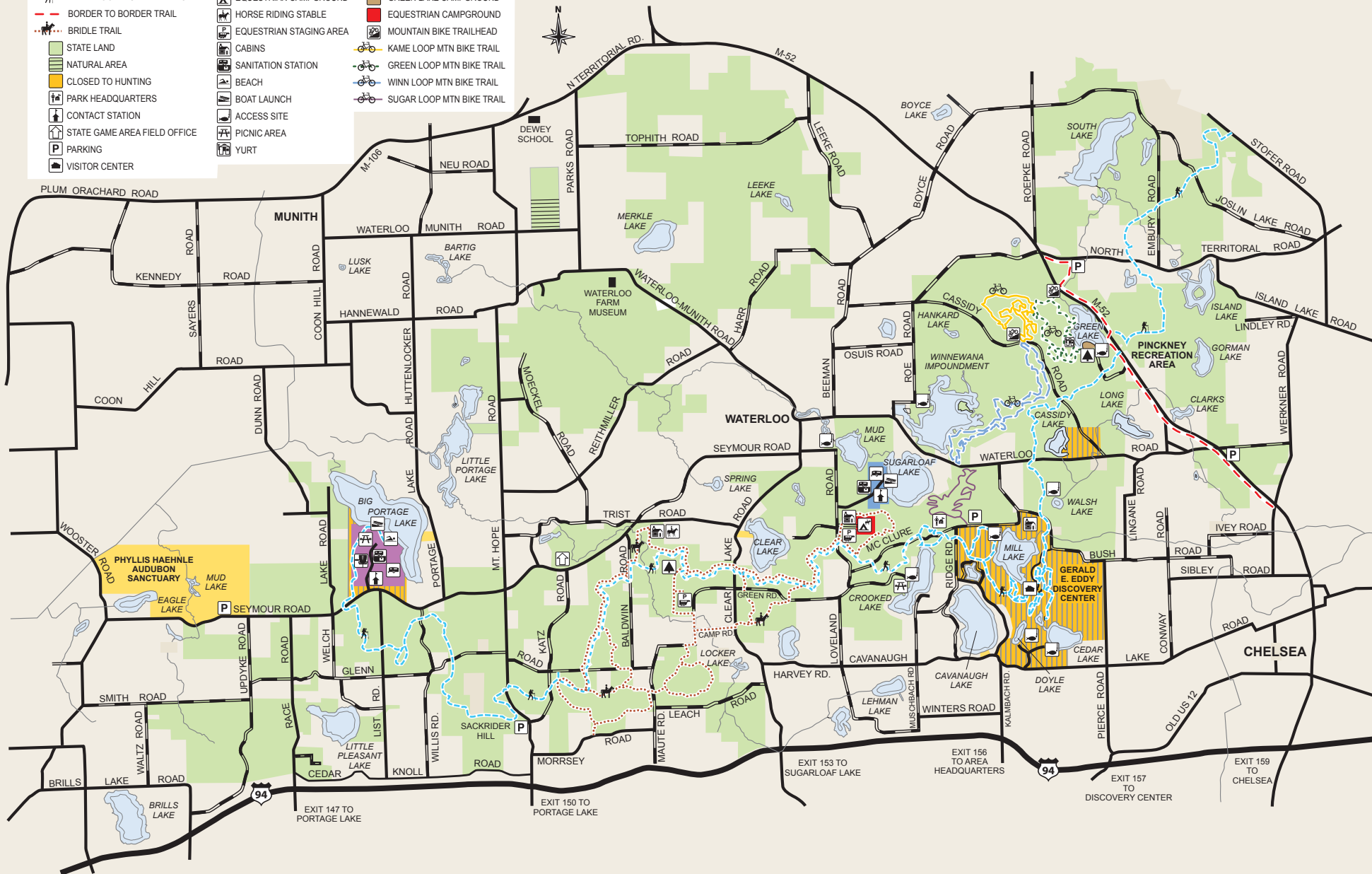


Waterloo Recreation Area

- PAVED ROAD
- GRAVEL ROAD
- WATERLOO-PINKNEY HIKING TRAIL
- BORDER TO BORDER TRAIL
- BRIDLE TRAIL
- STATE LAND
- NATURAL AREA
- CLOSED TO HUNTING
- PARK HEADQUARTERS
- CONTACT STATION
- STATE GAME AREA FIELD OFFICE
- P PARKING
- VISITOR CENTER
- MODERN CAMPGROUND
- RUSTIC CAMPGROUND
- EQUESTRIAN CAMPGROUND
- HORSE RIDING STABLE
- EQUESTRIAN STAGING AREA
- CABINS
- SANITATION STATION
- BEACH
- BOAT LAUNCH
- ACCESS SITE
- PICNIC AREA
- YURT
- PORTAGE LAKE CAMPGROUND
- SUGARLOAF CAMPGROUND
- GREEN LAKE CAMPGROUND
- EQUESTRIAN CAMPGROUND
- MOUNTAIN BIKE TRAILHEAD
- KAME LOOP MTN BIKE TRAIL
- GREEN LOOP MTN BIKE TRAIL
- WINN LOOP MTN BIKE TRAIL
- SUGAR LOOP MTN BIKE TRAIL
- DISC GOLF
- COUNTY PARK



EXIT 147 TO PORTAGE LAKE

EXIT 150 TO PORTAGE LAKE

EXIT 153 TO SUGARLOAF LAKE

EXIT 156 TO AREA HEADQUARTERS

EXIT 157 TO DISCOVERY CENTER

EXIT 159 TO CHELSEA