

BARNs AND SHEDS

OCCUPANCY DESCRIPTION: Utility sheds are designed with an open front and only three exterior walls and may be of either wood frame or steel construction. The interior is usually unfinished, with no doors or partitioning and a dirt floor. No electrical or water service is included in the costs. They can be modified to be used for commodity or equipment storage only (no repair shop). Livestock loafing sheds include rub boards.

Feeder barns are designed for livestock shelter and feeding. They are open-front sheds with wood or metal siding attached to wood posts or steel frames. The low quality has an endwall door, while the good quality has doors at both ends and rear vents. Feeders and water are not automated.

INCLUDED IN COSTS: Architects' fees and contractors' overhead and profit.

NOT INCLUDED IN COSTS: Heating systems.

FARM UTILITY STORAGE SHEDS

CLASS	TYPE	COST/ SQ. FT.	EXTERIOR WALLS	INTERIOR FINISH	LIGHTING & PLUMBING
C	Low cost	\$8.45	Open one side, cheap block, shed roof	Unfinished, no doors, dirt floor	None
D	Good	5.90	Open one side, boards/hvy. timber	Unfinished, no doors, dirt floor	None
	Average	5.30	Open one side, plywood/box frame	Unfinished, no doors, dirt floor	None
	Low cost	4.75	Open one side, plywood/post frame	Unfinished, no doors, dirt floor	None
DPOLE	Low cost	3.90	Open one side, metal on pole frame	Unfinished, no doors, dirt floor	None
S	Low cost	4.95	Open one side, steel frame/siding	Unfinished, no doors, dirt floor	None
SSLANT WALL	Low cost	4.55	Open front, metal on light slant frame	Unfinished, no doors, dirt floor	None

For commodity (hay) storage, add silage floor from adjustments table.

LOAFING SHEDS

D	Good	\$5.55	Open one side, plywood or boards on timber frame	Unfinished, no doors or vents, dirt floor, rub boards	None
	Average	5.20	Open one side, light plywood on box frame	Unfinished, no doors or vents, dirt floor, rub boards	None
	Low cost	4.85	Open one side, light plywood on post frame	Unfinished, no doors or vents, dirt floor, rub boards	None
DPOLE	Low cost	4.00	Open one side, metal on pole frame	Unfinished, no doors or vents, dirt floor, rub boards	None
S	Low cost	5.05	Open one side, steel frame and siding	Unfinished, no doors or vents, dirt floor, rub boards	None

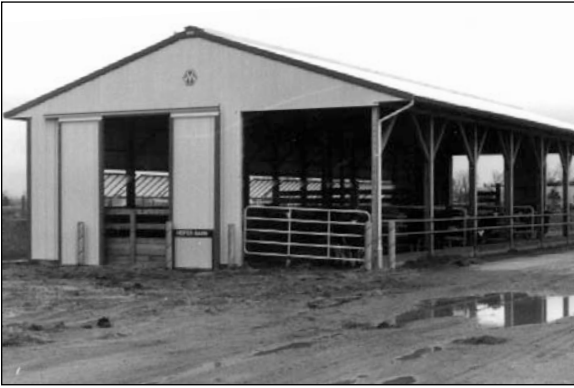
Add for scraper alley, feed driveway paving, etc., from adjustments table.

FEEDER BARNs (CATTLE SHEDS)

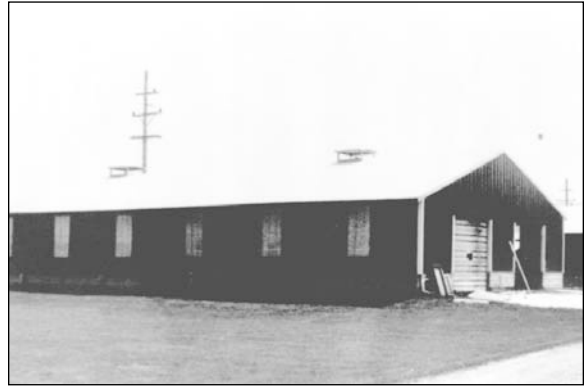
D	Good	\$6.35	Open one side, box frame and siding, good doors, rear vents	Unfinished, dirt floor, rub boards	Feeders, water troughs, not automated
	Average	5.60	Open one side, boards or siding on wood frame, end doors	Unfinished, dirt floor, rub boards	Feeders, water troughs, not automated
	Low cost	4.95	Open one side, boards or siding, post/box frame, one end door	Unfinished, dirt floor	Feeders, not automated
DPOLE	Good	5.30	Open one side, metal on pole frame, good doors, rear vents	Unfinished, dirt floor, rub boards	Feeders, water troughs, not automated
	Average	4.65	Open one side, metal siding on pole frame, end doors	Unfinished, dirt floor, rub boards	Feeders, water troughs, not automated
	Low cost	4.10	Open one side, metal on pole frame, one end door	Unfinished, dirt floor	Feeders, not automated
DHOOP ARCH	Average	4.50	Wood post, knee wall, pipe hoop frame, fabric cover, end curtains	Unfinished, dirt floor, rub boards	Feeders, water troughs, not automated
	Low cost	3.95	Wood post, pipe hoop, partial fabric cover, open ends	Unfinished, dirt floor	Feeders, not automated
S	Good	6.50	Open one side, metal on steel frame, good doors, rear vents	Unfinished, dirt floor, rub boards	Feeders, water troughs, not automated
	Average	5.80	Open one side, metal siding on steel frame, end doors	Unfinished, dirt floor, rub boards	Feeders, water troughs, not automated
	Low cost	5.15	Open one side, metal on steel frame, one end door	Unfinished, dirt floor	Feeders, not automated

Add for scraper alley, feed driveway paving, etc., from adjustments table.

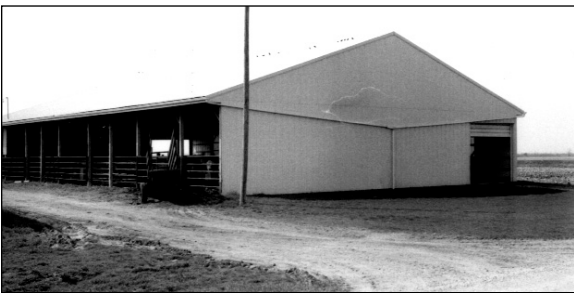
BARN AND SHEDS



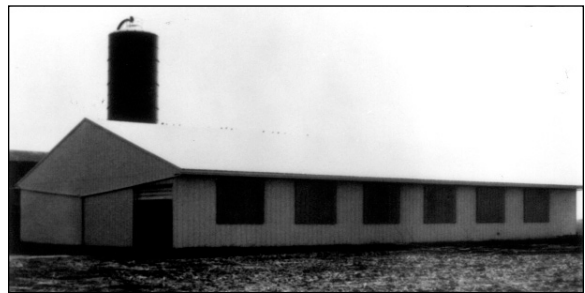
GOOD CLASS D_{POLE} FEEDER BARN



AVERAGE D_{POLE} FEEDER BARN



AVERAGE D_{POLE} FEEDER BARN



AVERAGE D_{POLE} FEEDER BARN



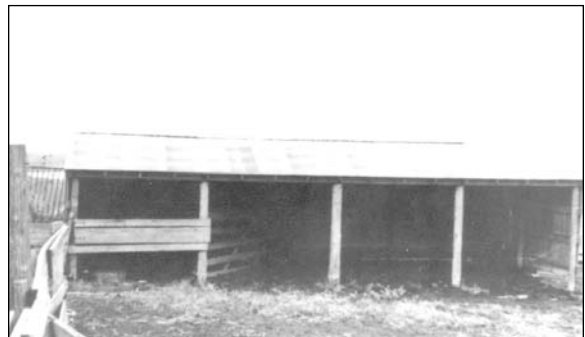
LOW CLASS D_{POLE} CATTLE SHED



AVERAGE CLASS D_{POLE} CATTLE SHED



LOW CLASS D_{POLE} STORAGE SHED



LOW CLASS D_{POLE} LOAFING SHED